

# High Kingsdown

## KINGSDOWN

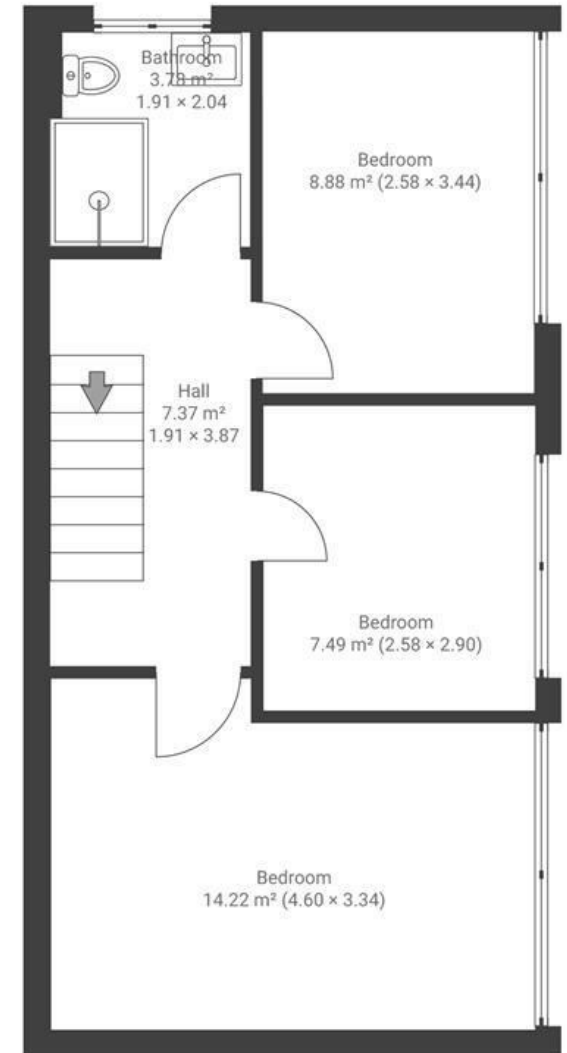
APPROXIMATE FLOOR AREA  
88 SQM / 947 SQFT



GROUND FLOOR



FIRST FLOOR



Boardwalk

# High Kingsdown

KINGSDOWN, BRISTOL



£590,000



Bristol, BS2

8FR



3 Bedrooms



2 Bathrooms

*"We've loved living here - it's the perfect location for our lives. We can walk to the Lido, Clifton Village, the Everyman Cinema, restaurants on Cotham Hill and close to the Mount Without. Plus hospitals, the university, sports centre, city centre, bus station and harbourside - so convenient! The house itself is light and airy, feels private even though it's in a friendly community and on a pedestrianised estate with people walking and families meeting up in the playground."*

