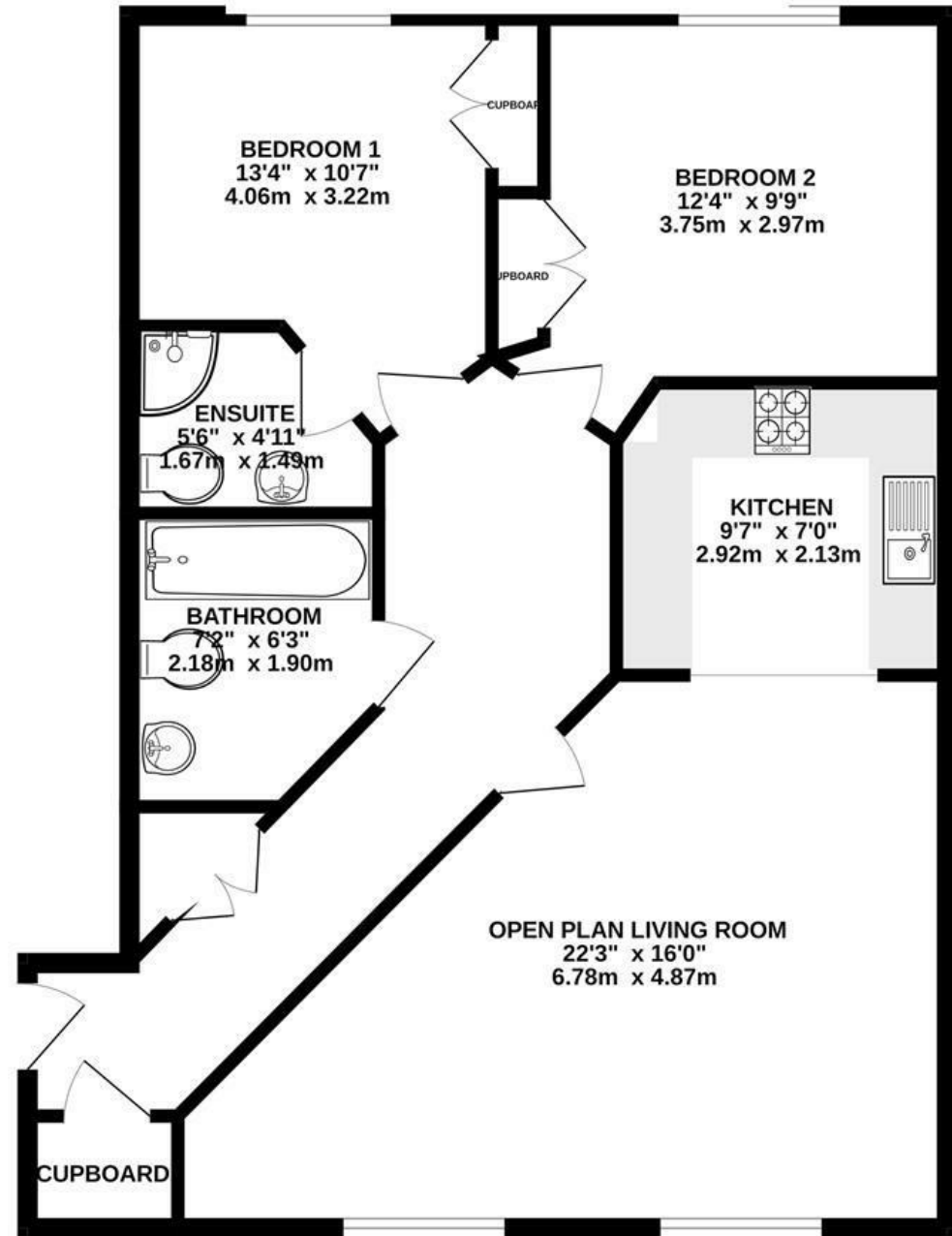


Squires Court

BEDMINSTER

APPROXIMATE FLOOR AREA
79 SQM / 854 SQFT



Illustrations are for reference purposes only,
measurements are approximate, not to scale.

Boardwalk

York Road

BEDMINSTER, BRISTOL



£280,000



2 Bedrooms



Bristol, BS3



2 Bathrooms

4B7

"I bought the flat in Squires Court as a first time buyer over 10 years ago, and it's been a brilliant place to live. The space in the flat is great; I live here with my partner and I have previously also rented out the second bedroom to a lodger. It feels peaceful despite being very close to everything. I love that there's so many great things very close by; Bristol Loaf, Grounded, the library, a gym, Asda, and we play tennis down the road at Victoria Park. The community in Squires Court has always been friendly with good neighbours (and we have a very helpful Facebook group!) and I feel very connected to the block and the local area. I really like having a dedicated parking space (which I rent when not in use) and secure bike parking."

