

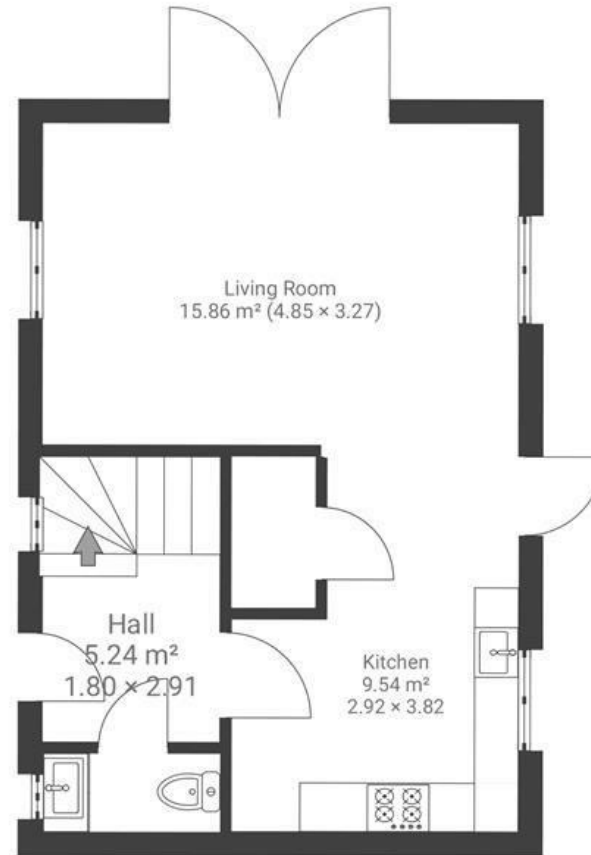
Athlone Walk

KNOWLE WEST

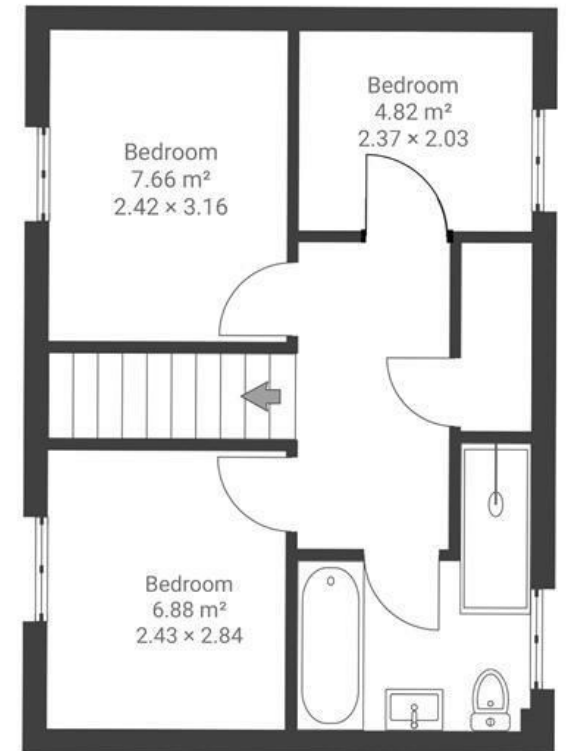
APPROXIMATE FLOOR AREA
71 SQM / 764 SQFT



GROUND FLOOR



FIRST FLOOR



Boardwalk

Athlone Walk

KNOWLE WEST, BRISTOL



£300,000



3 Bedrooms



Bristol, BS4



2 Bathrooms

1NR



"Living in 6A has the special feeling of a brand new home in a quiet well-established neighbourhood. The house is super comfy, light and airy as well as energy efficient. The kids love the family room as well as playing in the garden, and the grown-ups love the easy off-road parking and enclosed courtyard, great for drying washing and pets."