

# New Buildings

FISHPONDS

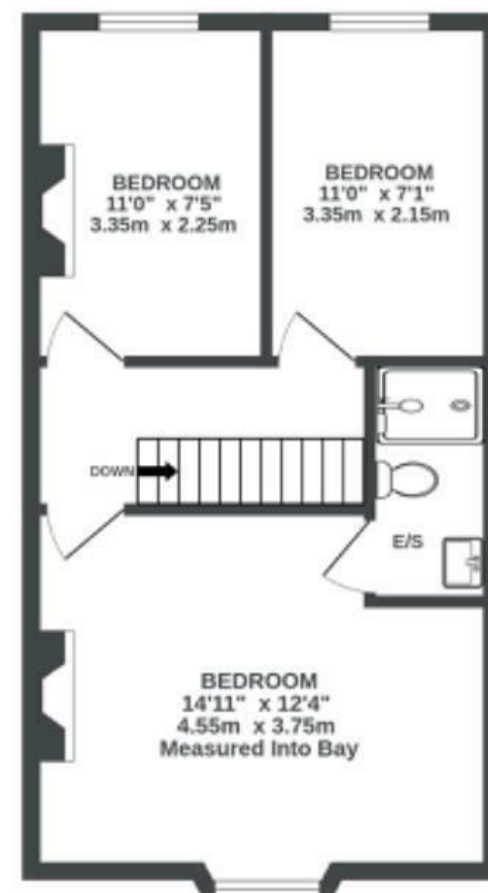
APPROXIMATE FLOOR AREA  
83.4 SQM / 898 SQFT



GROUND FLOOR  
494 sq.ft. (45.9 sq.m.) approx.



1ST FLOOR  
404 sq.ft. (37.5 sq.m.) approx.



Illustrations are for reference purposes only, measurements are approximate, not to scale.

Boardwalk

# New Buildings , BRISTOL

£

£325,000

zzz

3 Bedrooms



Bristol, BS16

2BT



1 Bathrooms

*"Living on our quiet cul de sac has been great. Having the Frome Valley just around the corner as well as the Bristol to Bath cycle path means that there is always something to do."*

