

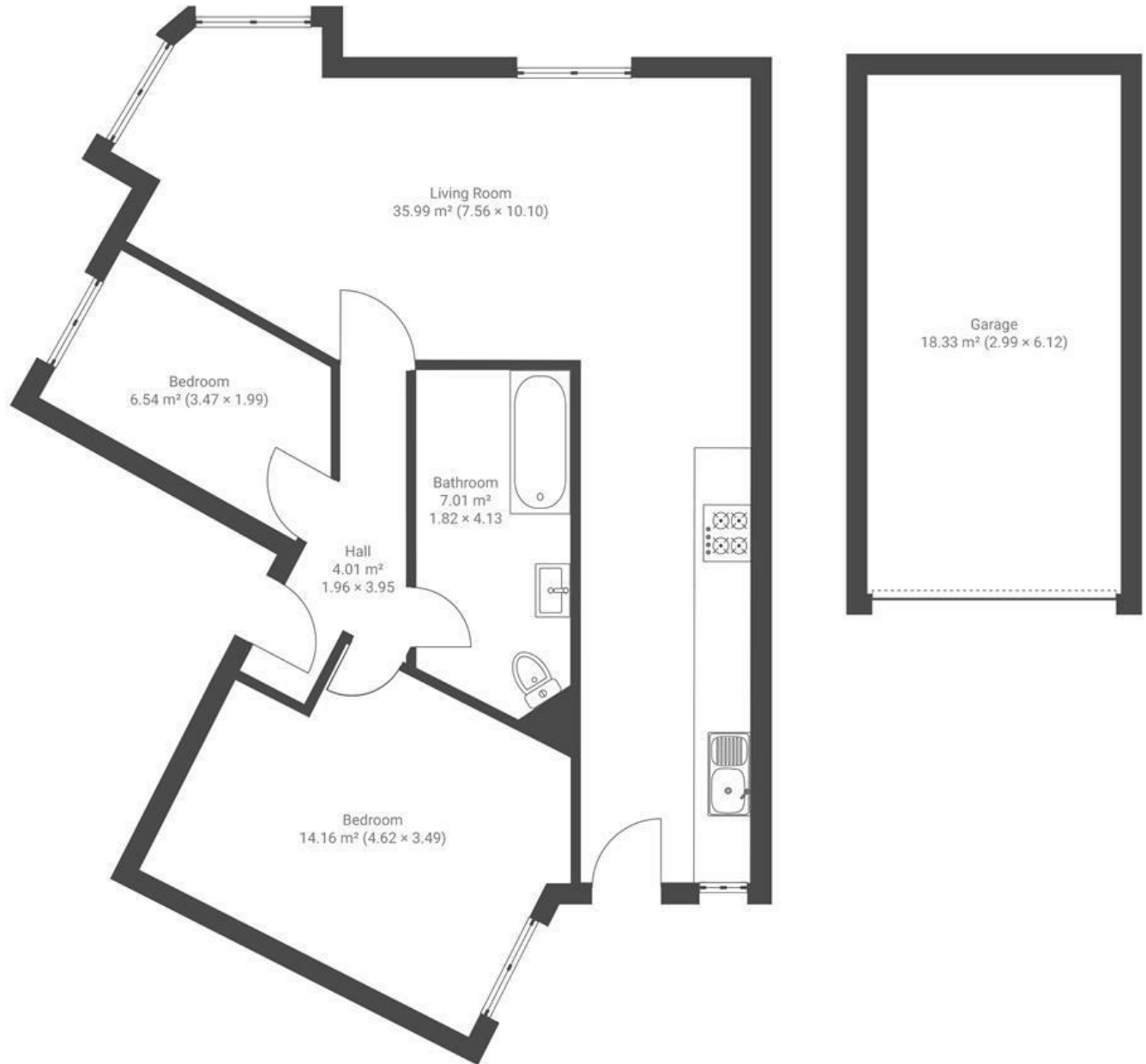
Kelston Road

MANOR FARM

APPROXIMATE FLOOR AREA
70.2 SQM / 755 SQFT



GROUND FLOOR



Boardwalk

Kelston Road

MANOR FARM, BRISTOL



£250,000



2 Bedrooms



Bristol, BS10

5FS



1 Bathrooms

"This flat has been the perfect first home for us. Windows in all directions catch the sun at all times of day, and the wrap around kitchen and living room arrangement has offered extensive possibilities to make the place our own. The outside area and attached garage were the real selling point, which gave us the freedom to have garden and workshop too."

