

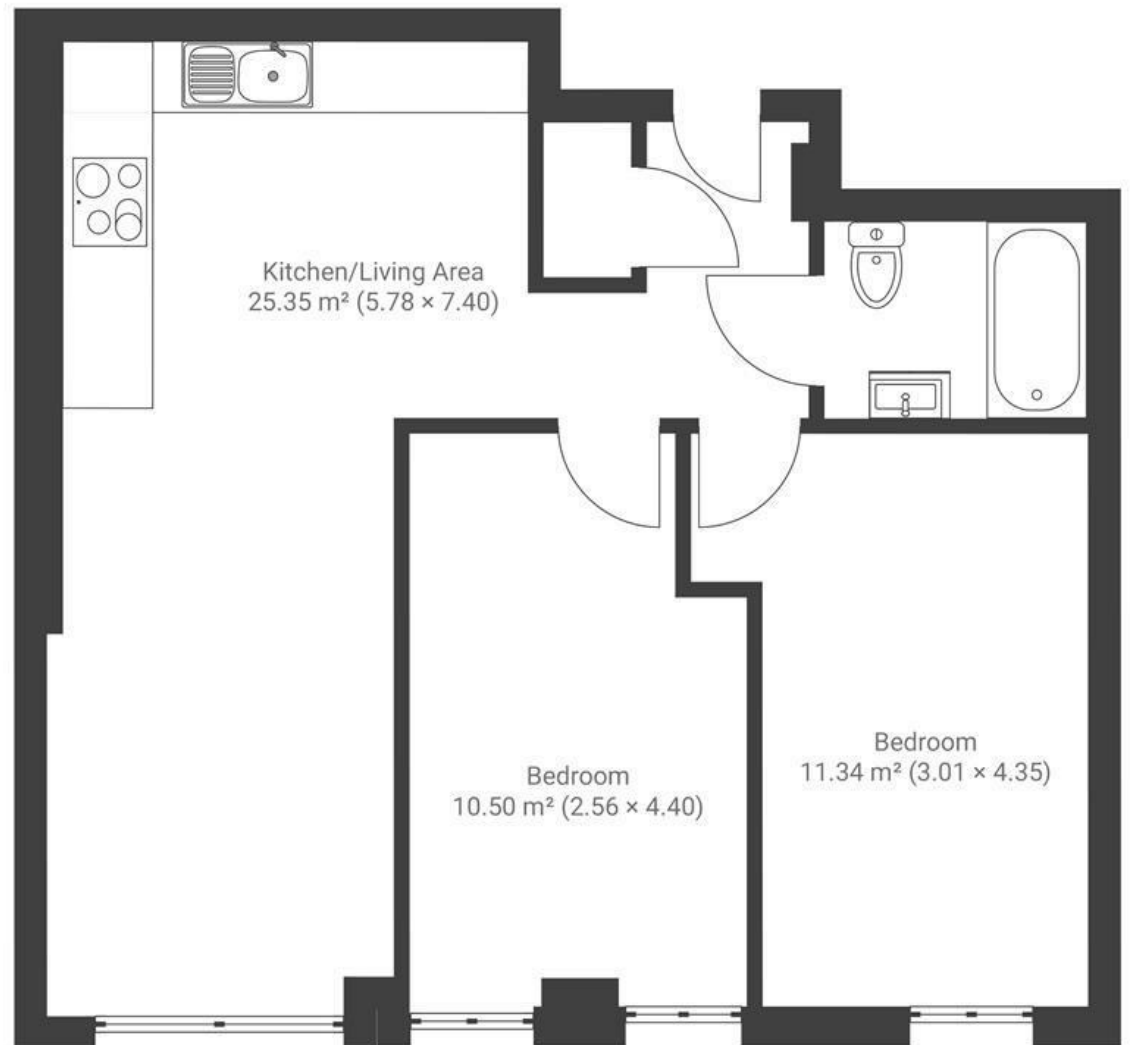
Portland Square

ST PAULS

APPROXIMATE FLOOR AREA
53.2 SQM / 572 SQFT



FIRST FLOOR



Boardwalk

Portland Square , BRISTOL

£

£290,000

ZZZ

2 Bedrooms



Bristol, BS2

8R7



1 Bathrooms

"It's a beautiful flat in a perfect central location. It's just across the road from Cabot circus and about a ten to fifteen minute walk to temple meads. The harbourside is really close and it's just a great location for everything! The Artist Residence next door is a beautiful place with great coffee, food and cocktails. There is so much happening in the area, along with a number of places for great food. You can just pop out on an evening and find some amazing food or some live music in Stokes Croft."

