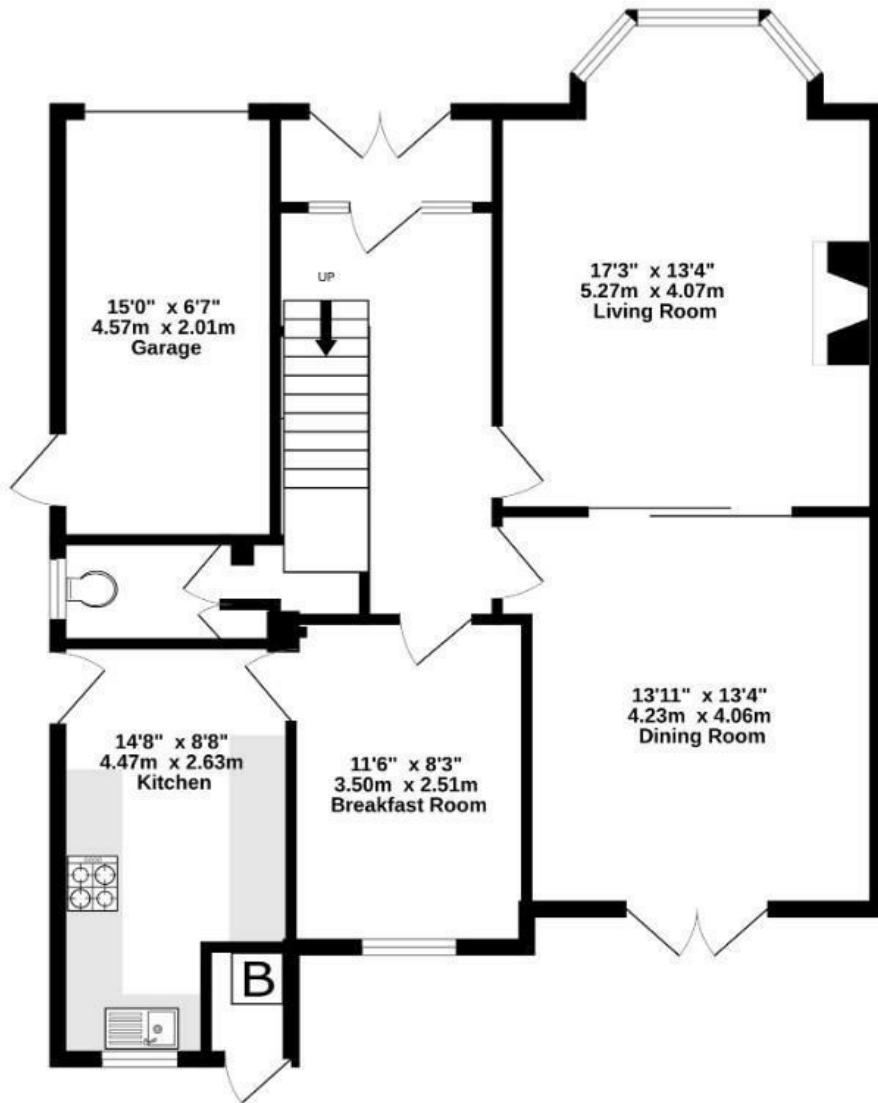
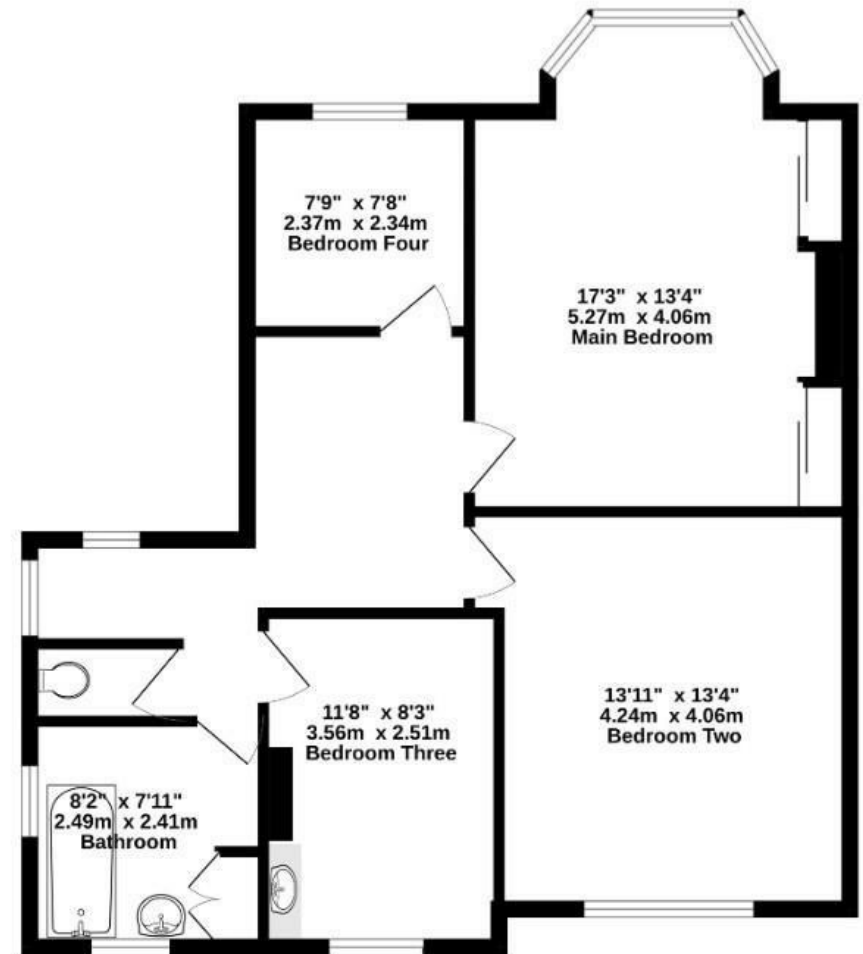


GROUND FLOOR
868 sq.ft. (80.7 sq.m.) approx.



1ST FLOOR
725 sq.ft. (67.3 sq.m.) approx.



TOTAL FLOOR AREA : 1593 sq.ft. (148.0 sq.m.) approx.

Whilst every attempt has been made to ensure the accuracy of the floorplan contained here, measurements of doors, windows, rooms and any other items are approximate and no responsibility is taken for any error, omission or mis-statement. This plan is for illustrative purposes only and should be used as such by any prospective purchaser. The services, systems and appliances shown have not been tested and no guarantee as to their operability or efficiency can be given.
Made with Metropix ©2024

Boardwalk

The Crescent

HENLEAZE, BRISTOL

£

£850,000

z z z

4 Bedrooms



Bristol, BS9

4RW



2 Bathrooms

'This has been our lovely family home since 1964, bathed in sunlight throughout the day, making every room feel warm and inviting. It's perched high on a hill, offering incredible views and a peaceful atmosphere, yet it's close to excellent local schools and all the essentials. The Crescent has an excellent and busy Community Whatsapp group where neighbors are ready to help each other out as well as organising coffee mornings and street parties. The location is just brilliant for family life.'

