

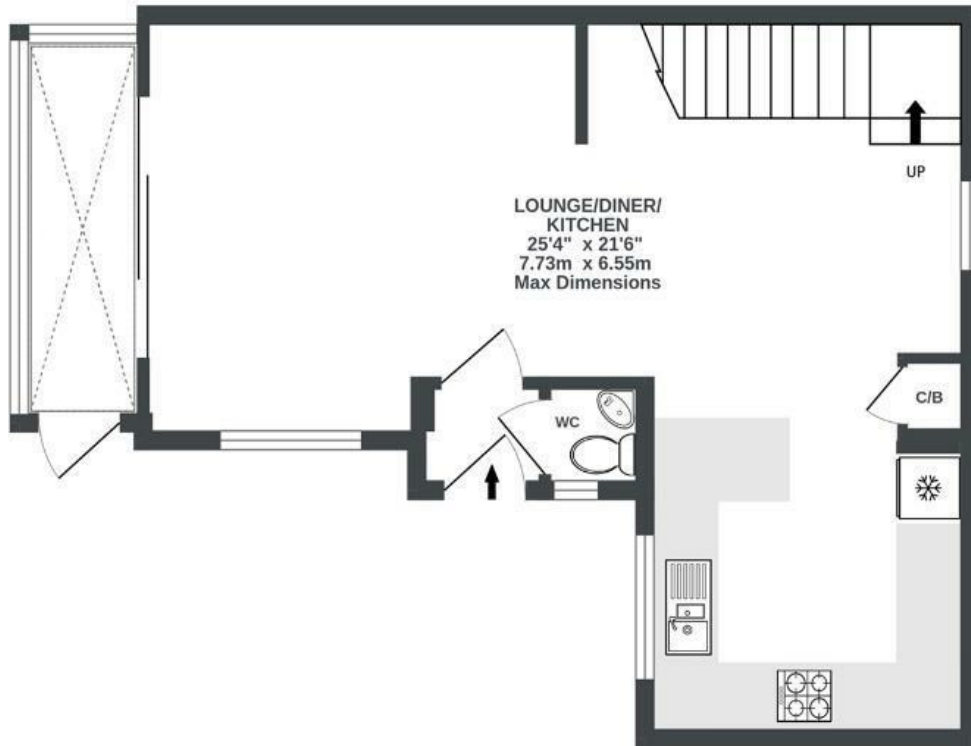
Winchester Road

BRISLINGTON

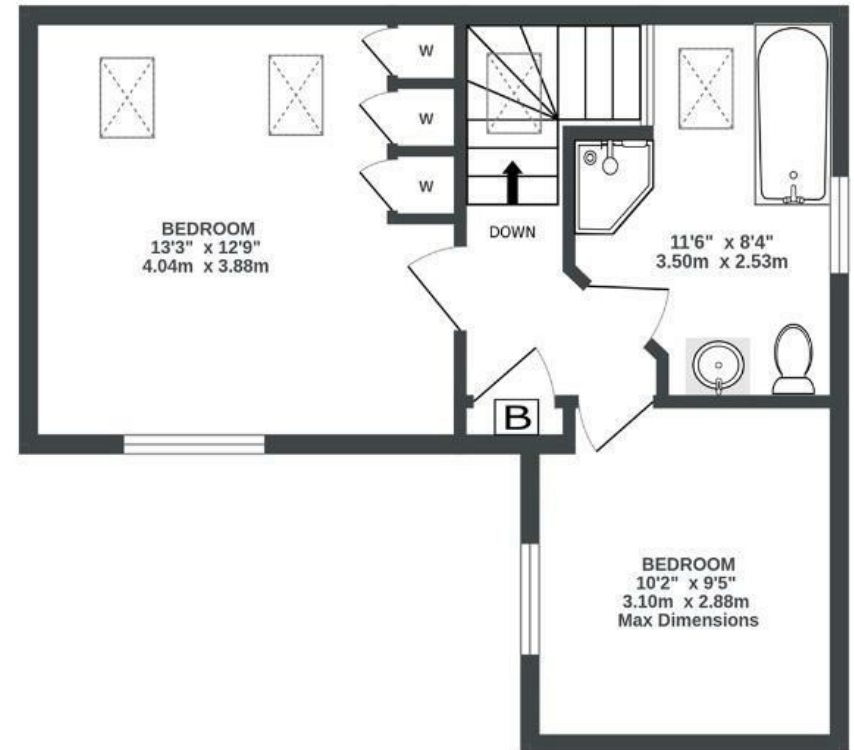
APPROXIMATE FLOOR AREA
80 SQM / 861 SQFT



GROUND FLOOR
460 sq.ft. (42.7 sq.m.) approx.



1ST FLOOR
402 sq.ft. (37.3 sq.m.) approx.



Illustrations are for reference purposes only, measurements are approximate, not to scale.

Boardwalk

Winchester Road

BRISLINGTON, BRISTOL



£350,000



2 Bedrooms



Bristol, BS4



1 Bathrooms

3 N.I

"We have invested in the property with nearly everything being less than 2 years old. We feel we have turned the house into a lovely vibrant home that maximises space with savvy storage solutions and hard wearing fixtures and fittings, like the premium range Wren Kitchen and Sharps, fitted wardrobes in the main bedroom, which we hope the new owners will continue to benefit from for many years to come. whilst we are sad to be moving we are equally comforted by the fact someone else will make this their beloved home."

