

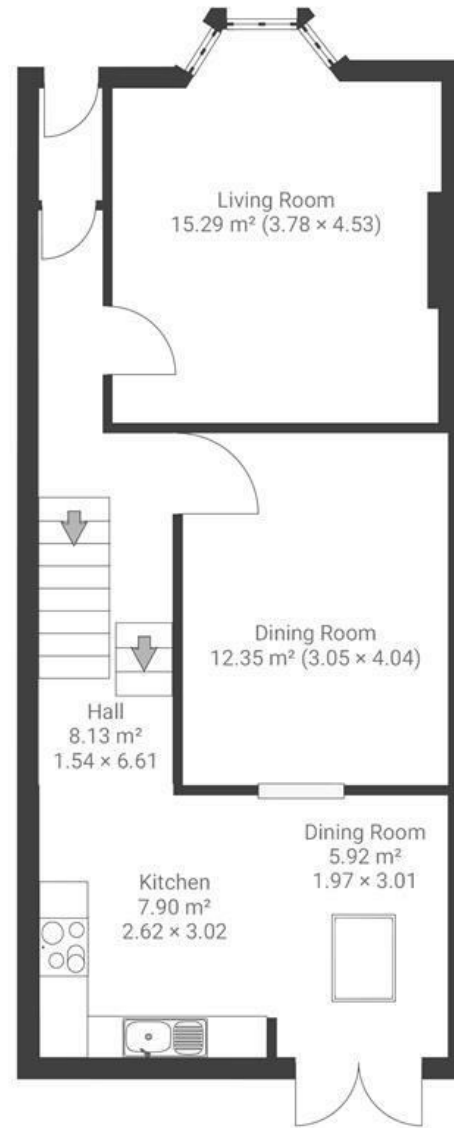
# Gwilliam Street

## BEDMINSTER

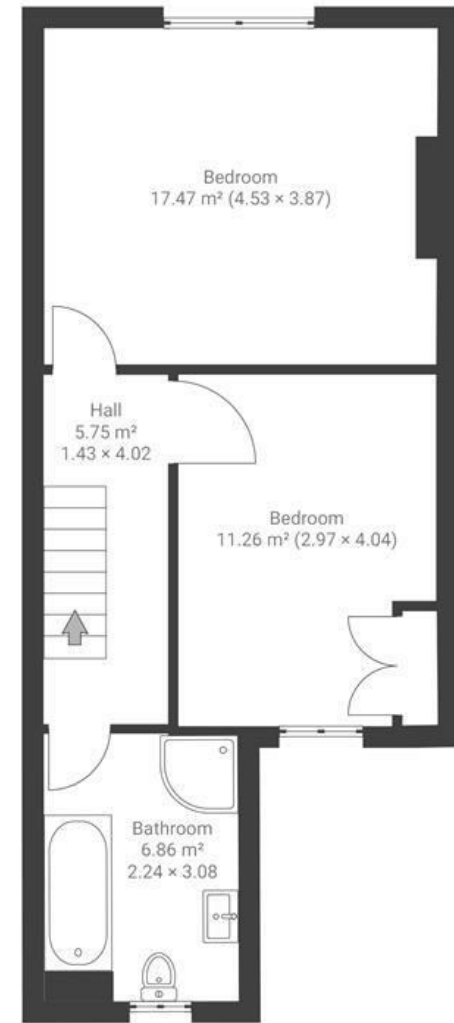
APPROXIMATE FLOOR AREA  
97 SQM / 1044 SQFT



GROUND FLOOR



FIRST FLOOR



Boardwalk

# Gwilliam Street

, BRISTOL

£

£450,000

zZz

2 Bedrooms



Bristol, BS3

41 T



1 Bathrooms

*"Gwilliam Street has been a delightful place to live over the last nine years. It's a small and peaceful street with a strong sense of community and lovely neighbours. Victoria Park takes a minute to walk to; this large and well maintained park has lots of facilities and frequent events (of which the 5th November bonfire is particularly excellent); as well as the best twilight view of the city."*

