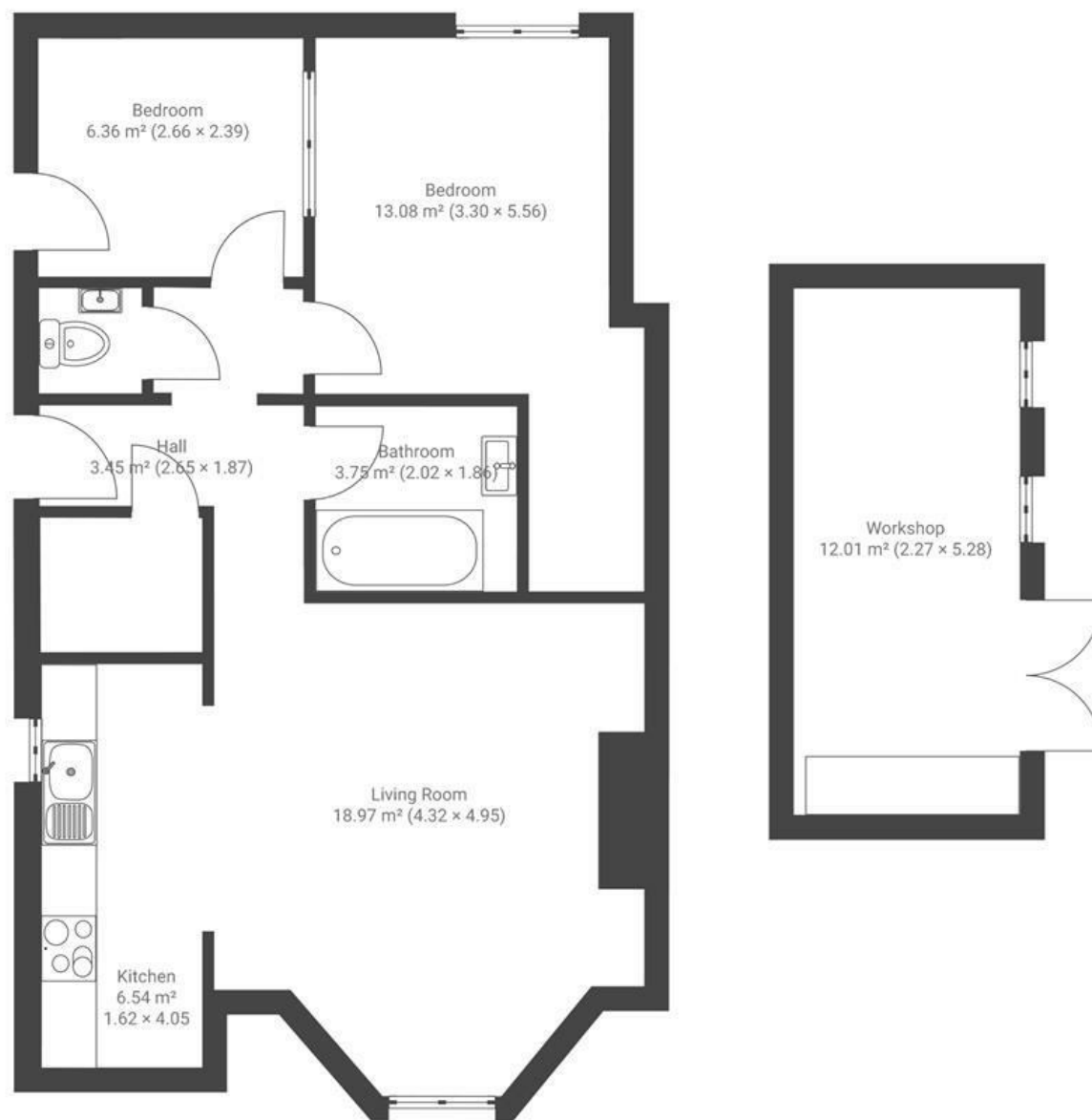


Wells Road

TOTTERDOWN

APPROXIMATE FLOOR AREA
72.3 SQM / 778 SQFT



Boardwalk

Wells Road , BRISTOL

£

£295,000

ZZZ

2 Bedrooms



Bristol, BS4

2AG



1 Bathrooms

"We have absolutely loved living and renovating our gorgeous flat! Located in the perfect area, close to friendly pubs, shops and people we have befriended that will be our friends forever. The addition of Bru Ha Ha brew pub next door has been incredible, with friendly staff, delicious food and even better beer. Our flat has been a joy to live in, with a super versatile main living space and the addition of the summerhouse that we have transformed into an office."

