

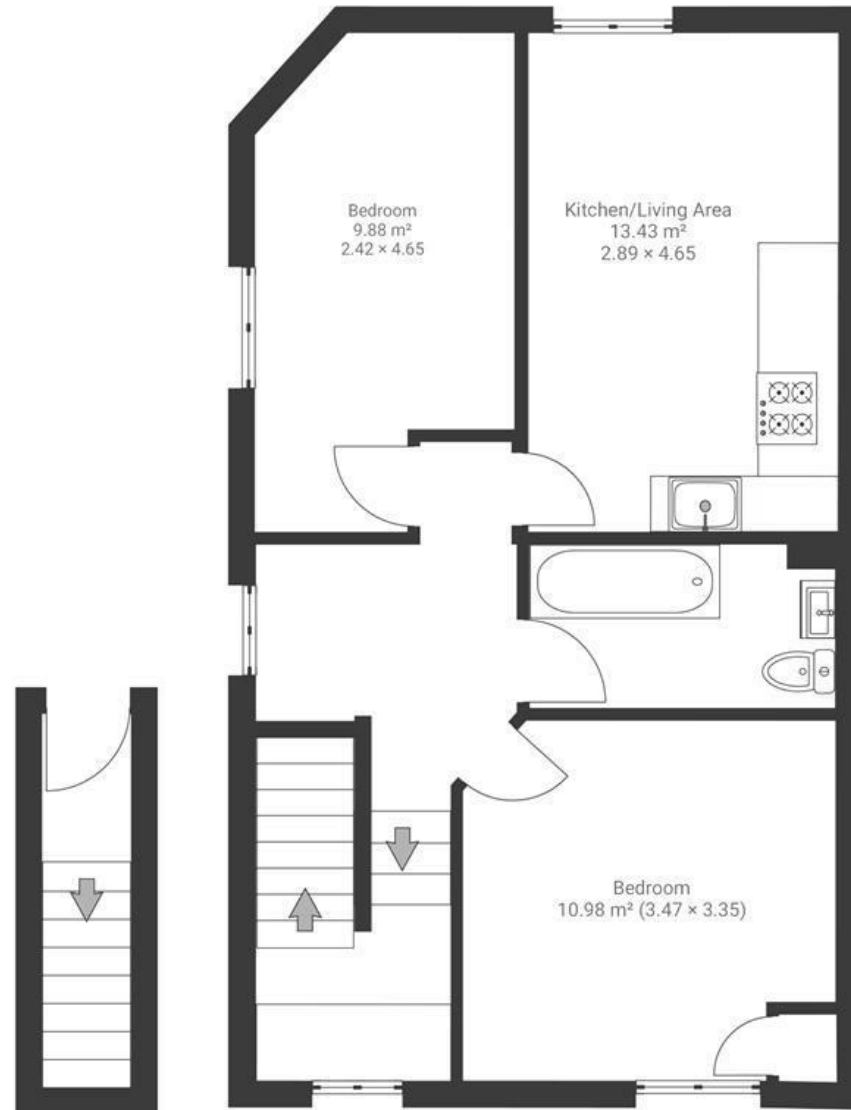
# Brigstocke Road

## ST PAUL'S

APPROXIMATE FLOOR AREA  
55.2 SQM / 594 SQFT



FIRST FLOOR



Boardwalk

# Brigstocke Road, , BRISTOL



£250,000



2 Bedrooms



Bristol, BS2

811A



1 Bathrooms

*"The area is vibrant and offers easy access to central Bristol and Gloucester Road's great restaurants, pubs, and shops. I was drawn to the natural light from windows on three sides. Being centrally located, I can walk everywhere, and the nearby bus station makes leaving the city convenient. The close-knit community has given me connections I'll truly miss."*

