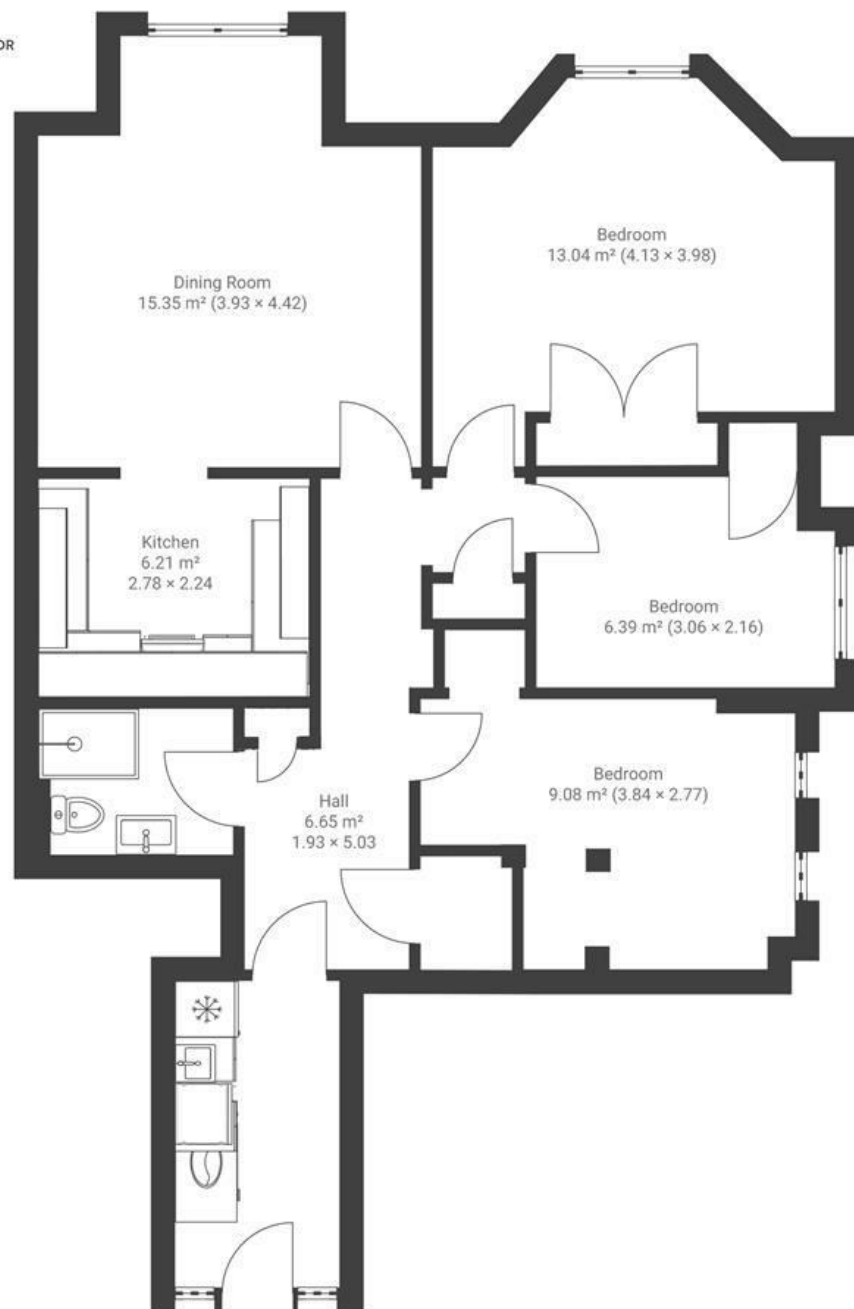


Queens Avenue CLIFTON

APPROXIMATE FLOOR AREA
73.5 SQM / 792M SQFT



LOWER GROUND FLOOR



Boardwalk

Queens Avenue

CLIFTON, BRISTOL



£397,750



3 Bedrooms



Bristol, BS8



1 Bathrooms

1SF

“Queens Avenue is ideally located for the University as well as all the pubs, shops and cafes of the Clifton Triangle and Clifton Village. The flat has three double bedrooms and the large rear garden has been great for summer BBQ’s”

