

Fairfield Road

MONTPELIER

APPROXIMATE FLOOR AREA
185 SQM / 1991 SQFT



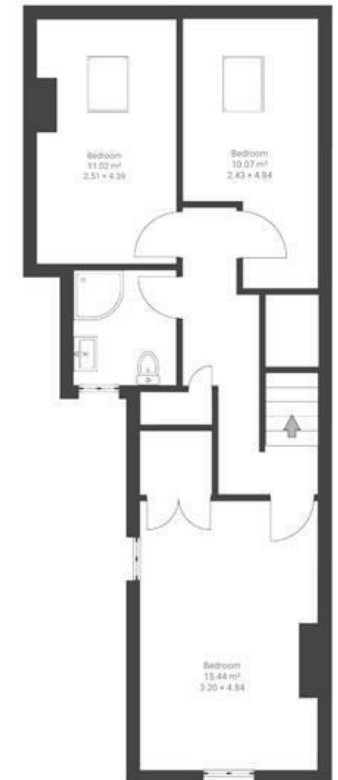
GROUND FLOOR



FIRST FLOOR



SECOND FLOOR



~~Boardwalk~~

Fairfield Road

MONTPELIER, BRISTOL

£

£775,000

ZZ

6 Bedrooms

📍

Bristol, BS6

5.1N

🛁

3 Bathrooms

'This is a very friendly neighbourhood which we'll miss hugely. Our family have made the most of access to good schools (both primary and secondary), great parks and amazing independent shops. Our favourite coffee spot is the café in St Andrews Park and for an evening meal, you can't beat Thali on York Road. We've also gained a lot from having Narrowways so close. When our sons were younger they enjoyed the city farm and walks along the allotments.'

