

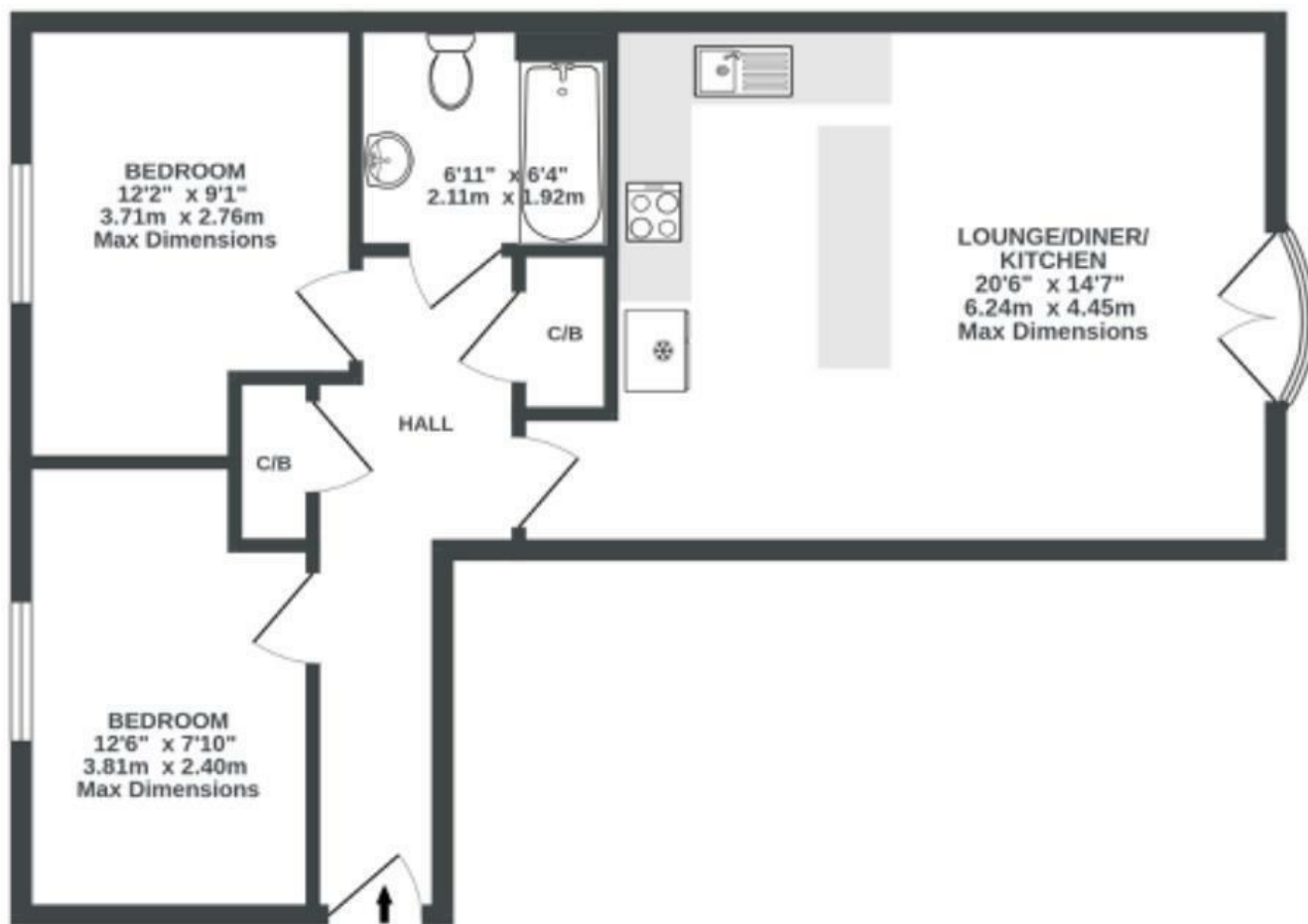
# Whistle Road

## MANGOTSFIELD

APPROXIMATE FLOOR AREA  
56.5 SQM / 608 SQFT



SECOND FLOOR  
608 sq.ft. (56.5 sq.m.) approx.



Illustrations are for reference purposes only, measurements are approximate, not to scale.

Boardwalk

# Whistle Road

MANGOTSFIELD, BRISTOL



£195,000



2 Bedrooms



Bristol, BS16

90X



1 Bathrooms

*"Being our first home this flat will always hold a special place and has given us lots of great memories. We have enjoyed getting stuck in, decorating and painting and making the place our own. The proximity to the cycle path is an amazing asset and provided a great place to both train for my first half marathon and take leisurely strolls to the Warmley Cafe."*

