

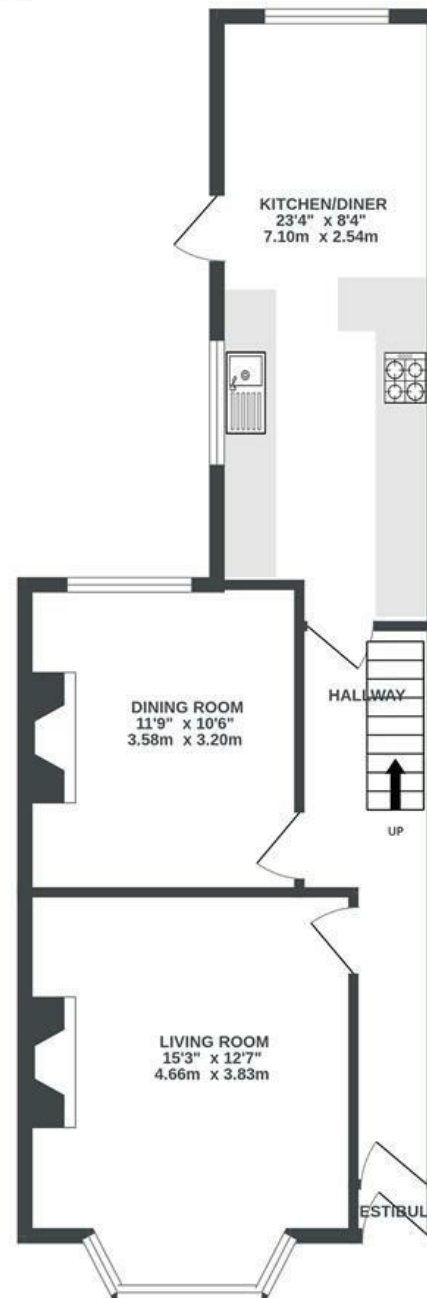
Selworthy Road

BRISLINGTON

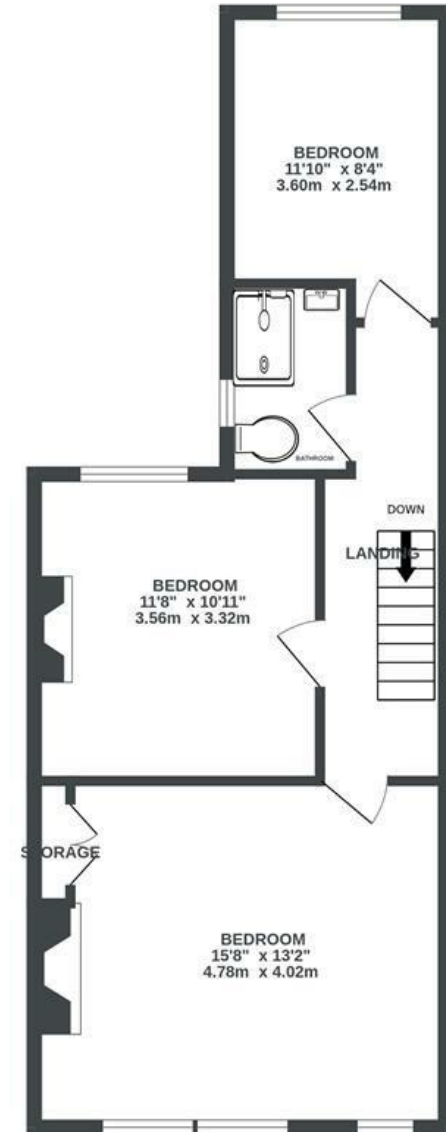
APPROXIMATE FLOOR AREA
101.6 SQM / 1094 SQFT



GROUND FLOOR



FIRST FLOOR



Boardwalk

Selworthy Road

, BRISTOL



£525,000



3 Bedrooms



Bristol, BS4



1 Bathrooms

21 F

"We've loved living on Selworthy Road. We've enjoyed the friendly community, original Victorian features, including the stained glass, marble fireplace, and our 2 open fires. The south-west facing garden is a sun-trap that makes a joy. Within easy striking distance are lots of green space: Arnos Vale, Redcatch Park with its lovely community garden & cafe, and Perret's Park. Oh, and because we're right on top of the hill, the air is wonderful!"

