

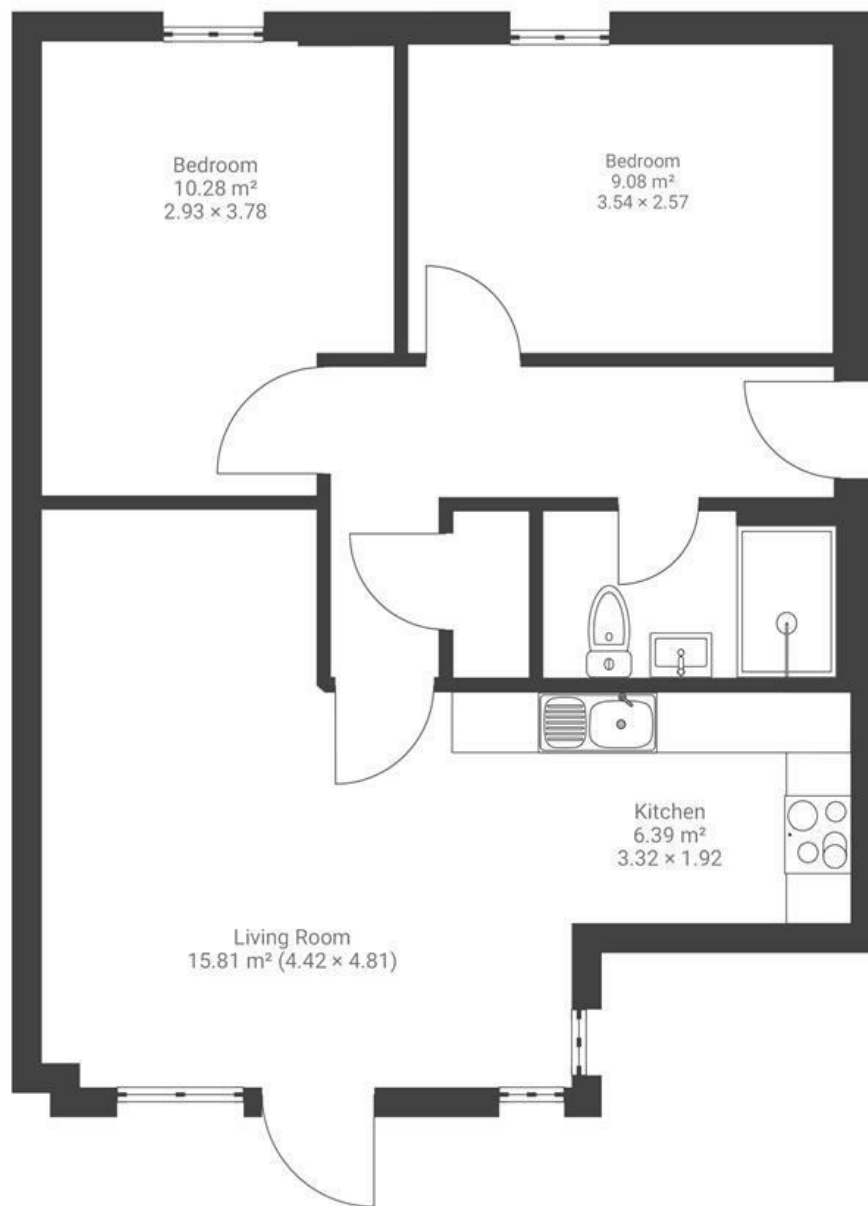
# Cooperage Court

## SOUTHVILLE

APPROXIMATE FLOOR AREA  
55 SQM / 592 SQFT



GROUND FLOOR



Boardwalk

# Cooperage Lane

SOUTHVILLE, BRISTOL



£325,000



2 Bedrooms



Bristol, BS3



1 Bathrooms

1FF



*"We have loved living here. The garden is a quiet green oasis, where we've enjoyed many sunny afternoon BBQs on the decking. The neighbourhood is fantastic - North Street is a short walk with an abundance of independent shops, cafés, bars and restaurants. We highly recommend the wine and cheese tasting at Kask, and a browse at the Tobacco Factory Market on a Sunday morning. Wapping Wharf is also only a short distance - perfect for an evening stroll and a drink by the water's edge."*