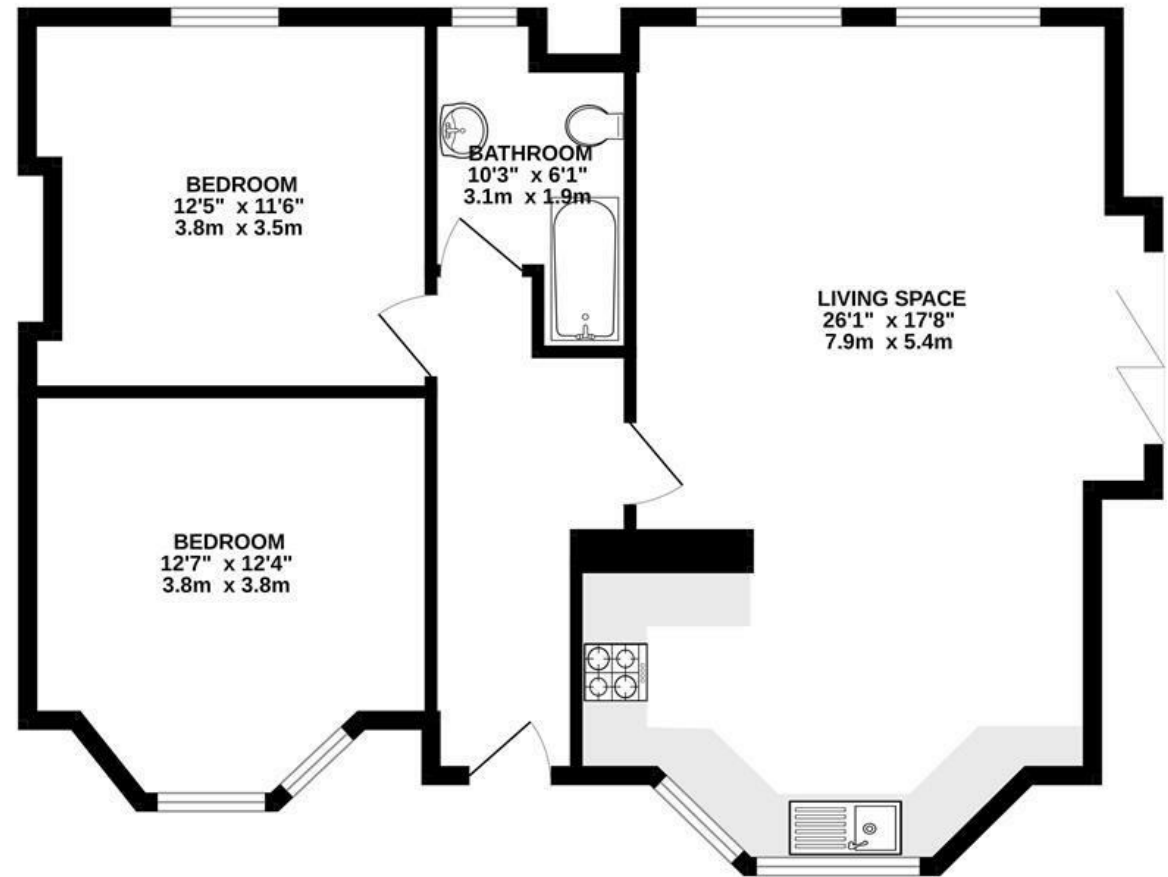


Elton Road

BISHOPSTON

APPROXIMATE FLOOR AREA
73 SQM / 787 SQFT



Illustrations are for reference purposes only,
measurements are approximate, not to scale.

Boardwalk

Elton Road

BISHOPSTON, BRISTOL

£

£415,000

zZz

2 Bedrooms



Bristol, BS7

8DF



1 Bathrooms

"We have loved living on Elton Road, you have the best of both worlds, a street with community feel, which is located a stone's throw away from the bustling Gloucester Road. You also have the luxury of being close to green spaces including Clifton Downs and Redland Green. We enjoy the option of walking to Glos Road, Whiteladies Road or Clifton village for a coffee or bite to eat. Some our favourite spots being FED, Kal Dosa and the Cadbury!"

