

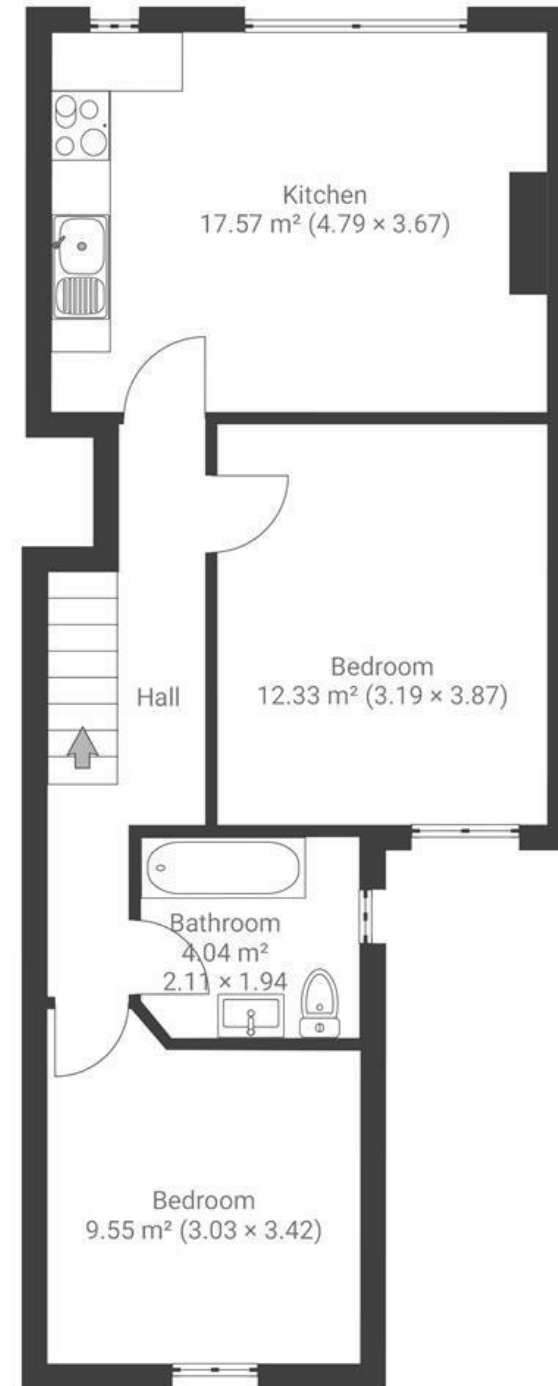
Sandy Park Road

BRISLINGTON

APPROXIMATE FLOOR AREA
51.4 SQM / 553 SQFT



FIRST FLOOR



Boardwalk

Sandy Park Road , BRISTOL



£250,000



2 Bedrooms



Bristol, BS4
3PG



1 Bathrooms

'We've really enjoyed bringing a new lease of life to this spacious building. The two flats have high ceilings and a great natural light throughout. We hope the new owners can enjoy the spaces we have created and the great local community on Sandy Park Road.'

