

# Park Row

## CITY CENTRE

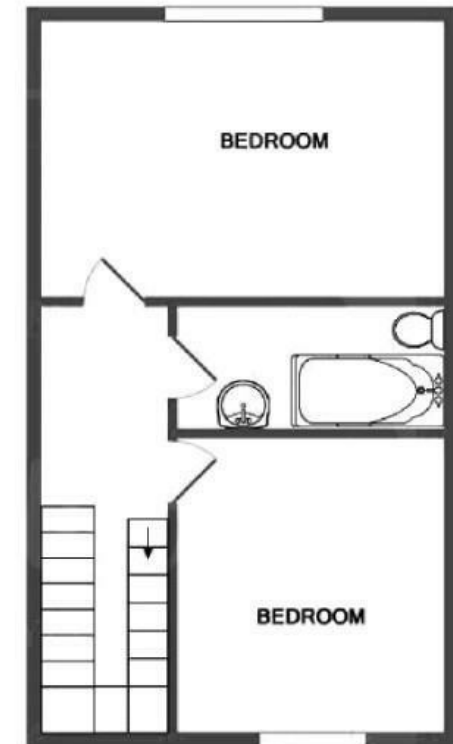
APPROXIMATE FLOOR AREA  
93.5 SQM / 1007 SQFT



GROUND FLOOR



FIRST FLOOR



Illustrations are for reference purposes only, measurements are approximate, not to scale.

**Boardwalk**

# Park Row , BRISTOL

£

£400,000

ZZZ

2 Bedrooms



Bristol, BS1

5LL



1 Bathrooms

*"We love the view out the back of the flat – perfect for watching fireworks on New Year's Eve and hot air balloons fly across the sky – the space and light, the location and proximity to everything in central Bristol"*

