

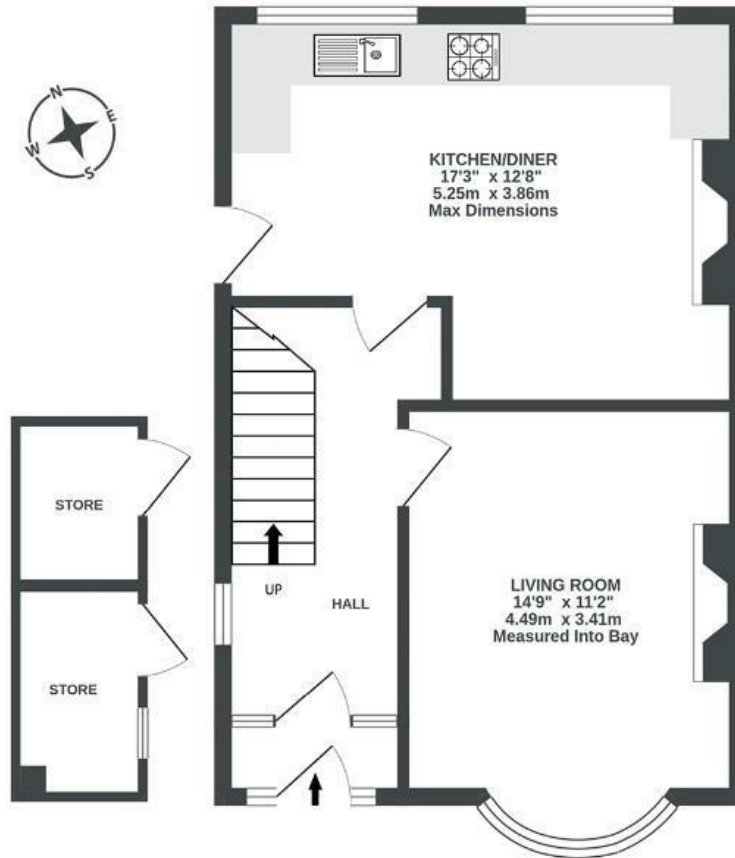
Snowdon Road

FISHPONDS

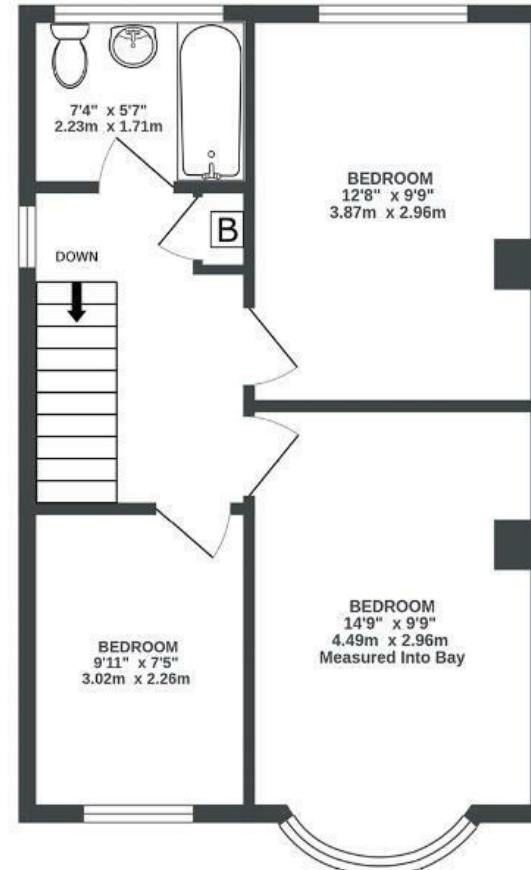
APPROXIMATE FLOOR AREA
81.6 SQM / 879 SQFT



GROUND FLOOR
431 sq.ft. (40.1 sq.m.) approx.



1ST FLOOR
448 sq.ft. (41.6 sq.m.) approx.



Illustrations are for reference purposes only, measurements are approximate, not to scale.

Boardwalk

Snowdon Road

FISHPONDS, BRISTOL



£375,000



3 Bedrooms



Bristol, BS16



1 Bathrooms

2FI

"We have been very proud to be only the second owners of this home since it was first commissioned. We have modernised the house to create a large kitchen/diner and rooms which are wonderfully light and bright whilst maintaining some of the original character and features. Our house is perfectly placed to take advantage of the vibrant shops and café's of Fishponds Road."

