

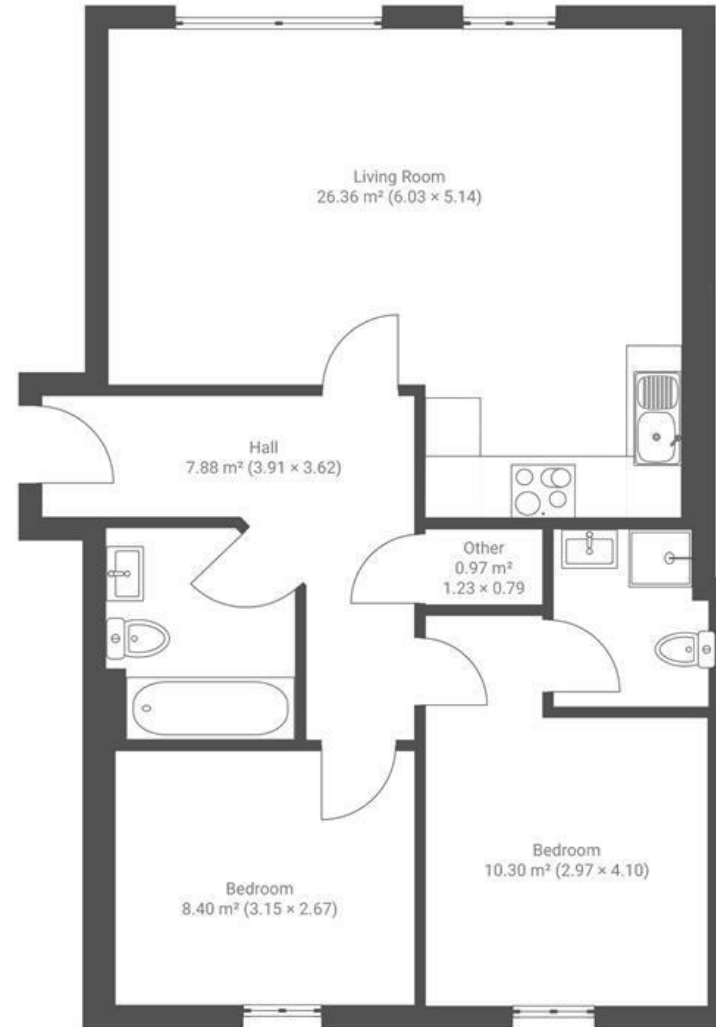
Paxton Drive

BEDMINSTER

APPROXIMATE FLOOR AREA
97 SQM / 667 SQFT



SECOND FLOOR



Boardwalk

Paxton Drive

, BRISTOL

£

£275,000

zZz

2 Bedrooms



Bristol, BS3

2BF



2 Bathrooms

“We love the location of our flat. It is within walking distance of the harbour side, city centre and our favourite coffee spots along North street. It strikes a perfect balance of city living and green spaces, with Greville Smyth park and Ashton Court on the doorstep. The front to back layout offers sunlight across the whole day and the view of Clifton Suspension bridge will be missed when we move.”

