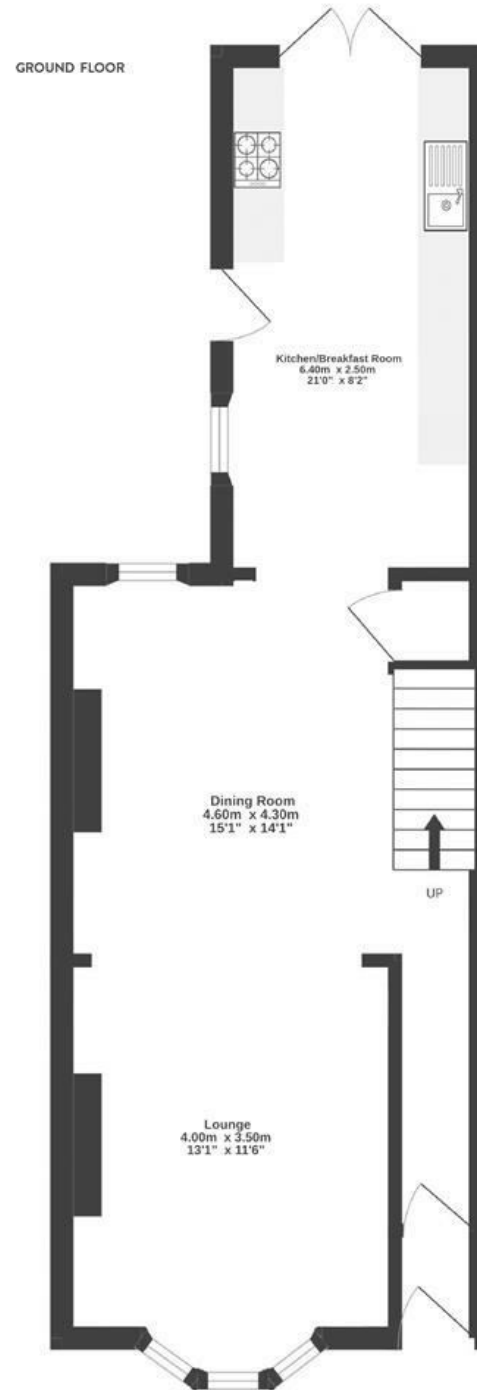


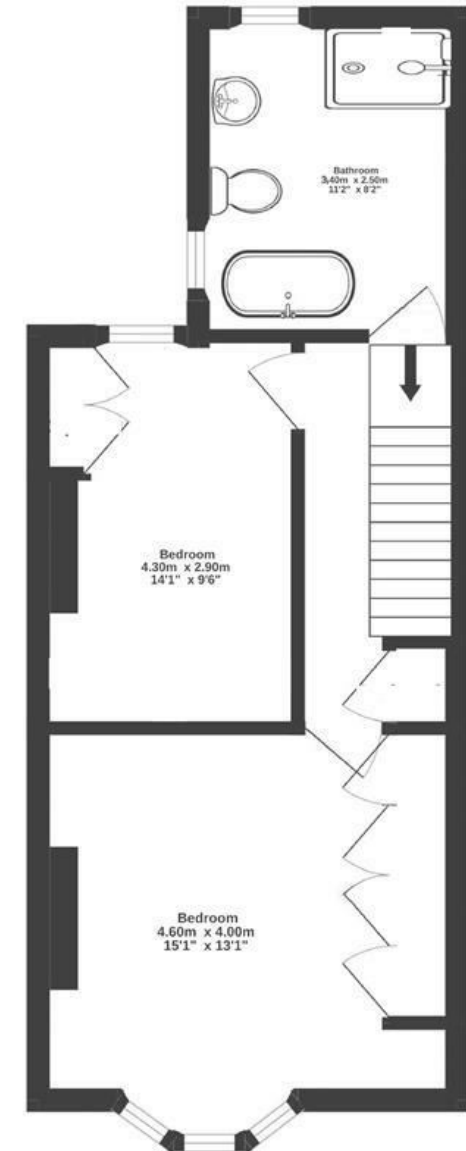
# Mount Pleasant Terrace

SOUTHVILLE

APPROXIMATE FLOOR AREA  
96 SQM / 1033 SQFT



FIRST FLOOR



Boardwalk

# Mount Pleasant , BRISTOL

£

£500,000



Bristol, BS3

11 F

ZZZ

2 Bedrooms



1 Bathrooms

*"We fell in love with our home from the outside first, its charming front garden and decorative bay window are lovely. The spacious open layout has been perfect for us with hosting large dinner parties, Christmas's and also now having a toddler. We are just off North Street with Hugo's a stone throw away. Sunday walks to the Tobacco Factory market, onto Wapping Wharf or Greville Park are fab. We love to cycle and have excellent access to countryside rides from the doorstep."*

