

# Newquay Road

## KNOWLE

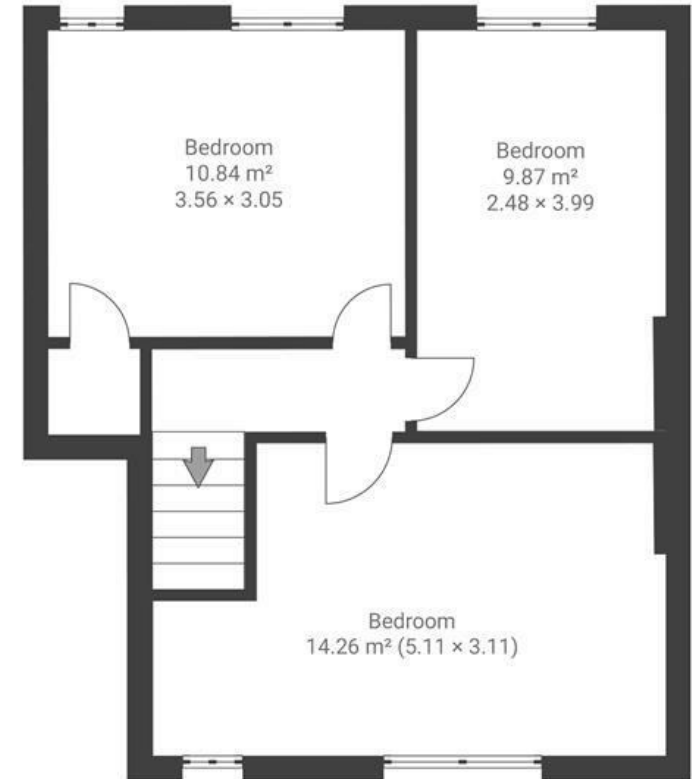
APPROXIMATE FLOOR AREA  
77.5 SQM / 834 SQFT



GROUND FLOOR



FIRST FLOOR



Boardwalk

# Newquay Road , BRISTOL



£275,000



3 Bedrooms



BS4 1EB



1 Bathrooms

*"This has been my home for 8 years and I have loved here. It has been a very convenient location; close proximity to Temple Meads and the city centre, but far enough away from all the hustle and bustle to be quiet. Redcatch Park is close by, with a community garden and a lovely cafe."*

