

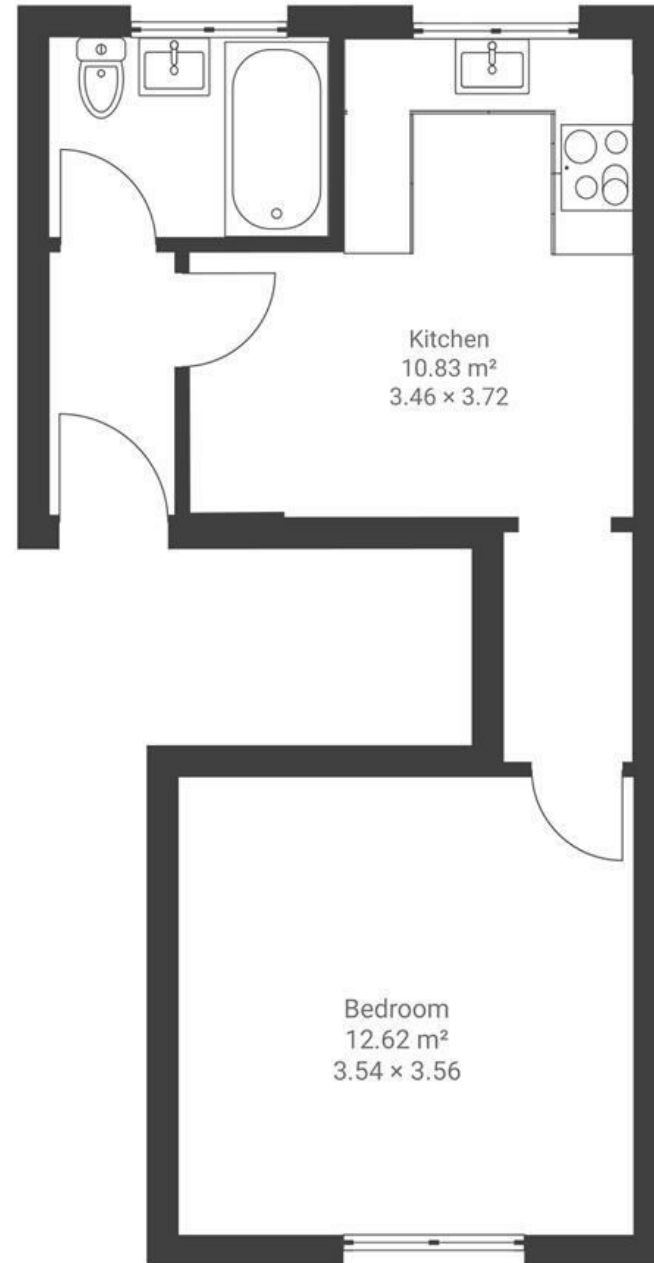
Albert Park

MONTPELIER

APPROXIMATE FLOOR AREA
33 SQM / 355 SQFT



GROUND FLOOR



Boardwalk

Albert Park , BRISTOL

£

£210,000

zZz

1 Bedrooms



Bristol, BS6

5NF



1 Bathrooms

"We've enjoyed bringing a new lease of life to this hall floor flat. The flat has great views onto the colourful houses of Montpelier. The location is ideal for city centre living being walking distance to Gloucester Road, Stokes Croft and the city centre."

