

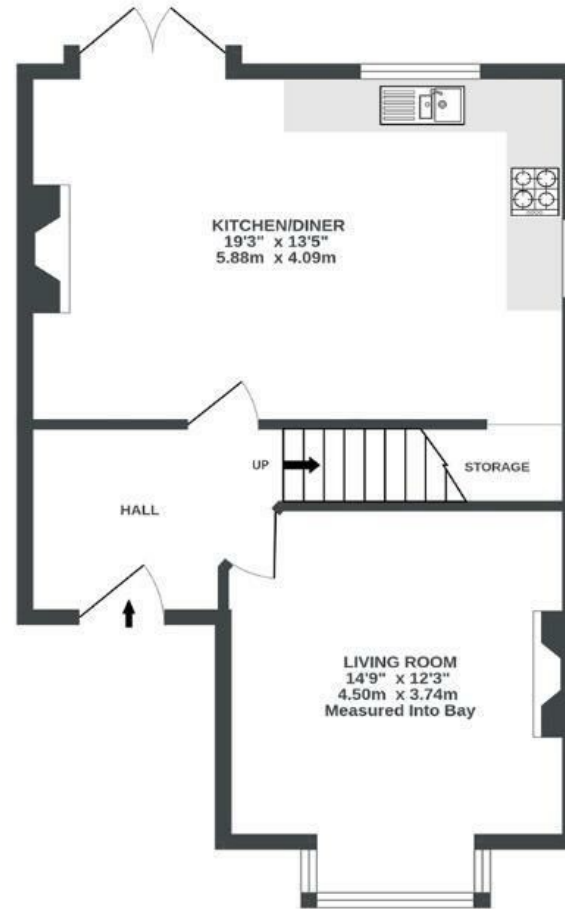
Muller Road

EASTVILLE

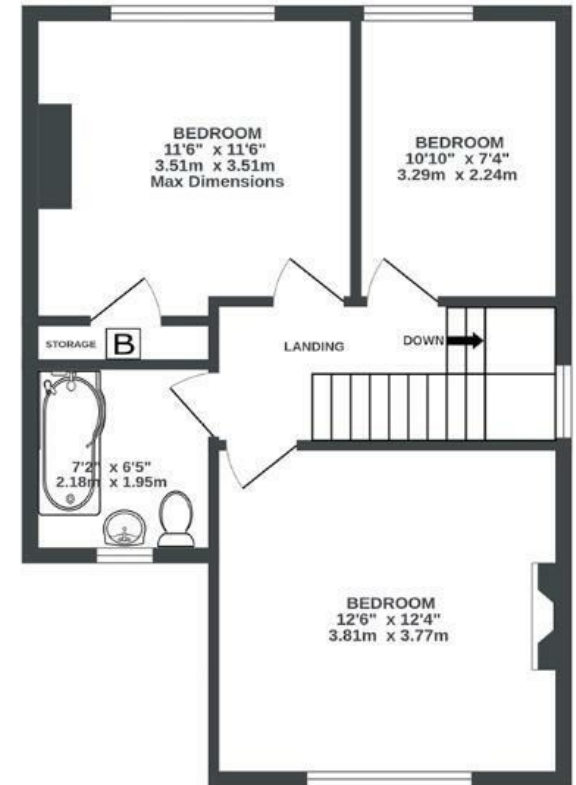
APPROXIMATE FLOOR AREA
91.3 SQM / 982 SQFT



GROUND FLOOR
504 sq.ft. (46.8 sq.m.) approx.



1ST FLOOR
478 sq.ft. (44.4 sq.m.) approx.



GARDEN ROOM
0 sq.ft. (0.0 sq.m.) approx.



Illustrations are for reference purposes only, measurements are approximate, not to scale.

Boardwalk

Muller Road

EASTVILLE, BRISTOL



£450,000



3 Bedrooms



Bristol, BS5



1 Bathrooms

6XS

"When we bought Muller Road, we didn't realise what an amazing location it was. We knew we wanted to be a short walk from St Werburghs with its City Farm, climbing centre, Narroways nature reserve and great pubs, but then we discovered the delights of Eastville Park, Purdown and Stoke Park, Snuff Mills and all the wonderful nature a walk or bike ride away. The garden space has been a dream for letting little ones totter around and become not-so-little ones, and the five-minute walk to one of the best primary schools in Bristol is a no-brainer. Add in the wonderful community hub that is The Old Library just up the hill, and you've got everything you need for a very happy and fulfilled life enjoying some of the best of Bristol."

