

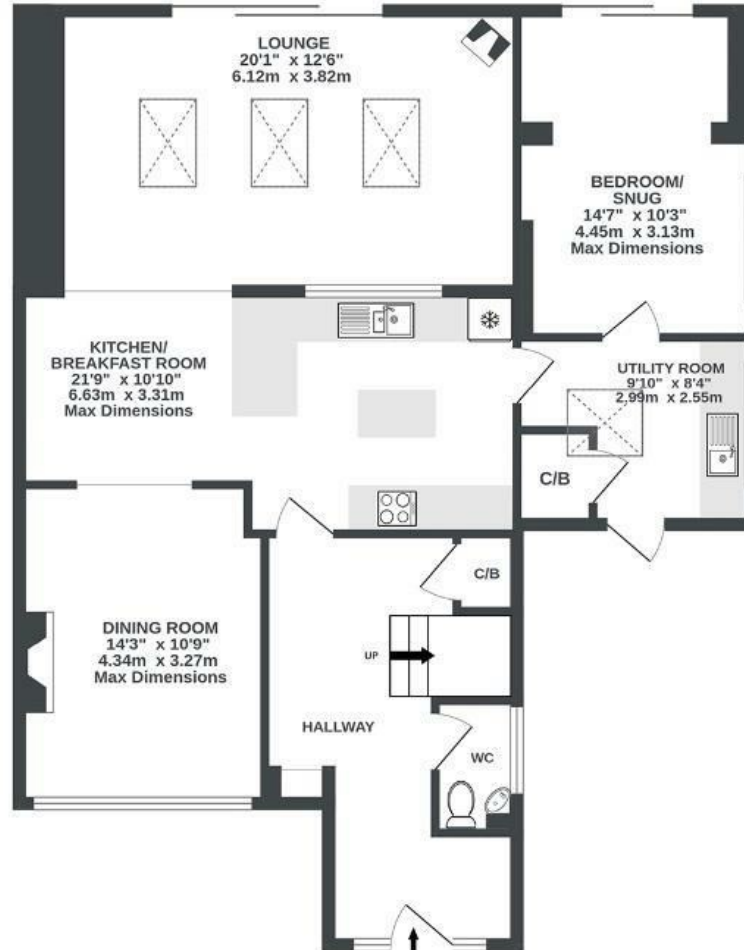
Gloucester Road

R U D G E W A Y

APPROXIMATE FLOOR AREA
140.7 SQM / 1514 SQFT



GROUND FLOOR
1018 sq.ft. (94.6 sq.m.) approx.



1ST FLOOR
496 sq.ft. (46.1 sq.m.) approx.



Illustrations are for reference purposes only, measurements are approximate, not to scale.

Boardwalk

Gloucester Road

RUDGEWAY, BRISTOL



£575,000



4 Bedrooms



Bristol, BS35

3RS



2 Bathrooms

'We love that we are surrounded by countryside, with lots of walks and wildlife in the area. We have been very happy here and have amazing neighbours. If it wasn't for the fact that the house is too big for us now that the family have left, we would love to stay here.'

