

Boardwalk

Edward Street

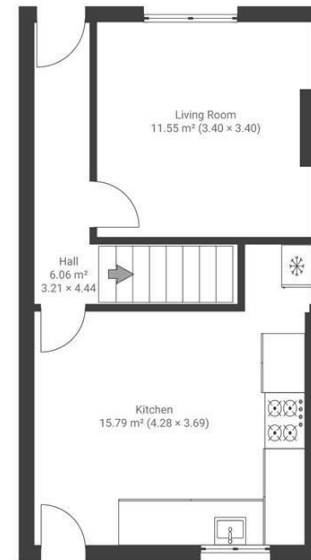
EASTVILLE, BRISTOL

Edward Street EASTVILLE

APPROXIMATE FLOOR AREA
72 SQM / 775 SQFT



GROUND FLOOR



FIRST FLOOR



Boardwalk

Edward Street

EASTVILLE, BRISTOL



£320,000



2 Bedrooms



Bristol, BS5

61 W



1 Bathrooms

"I've loved living in this house and am very sad to be selling. The access to green space is amazing, you've Eastville Park to one side, Greenbank Cemetery to another, and Royate Hill Nature Reserve and Allotments to the other. I've put a lot of love into the garden and it now has a productive apple, fig, and plum"

