

Boardwalk

Gilbert Road

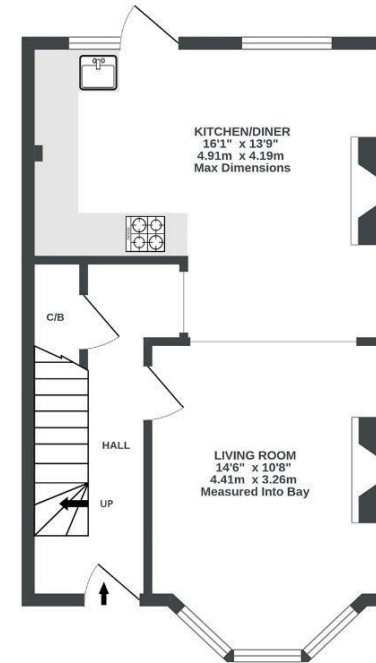
REDFIELD, BRISTOL

Gilbert Road REDFIELD

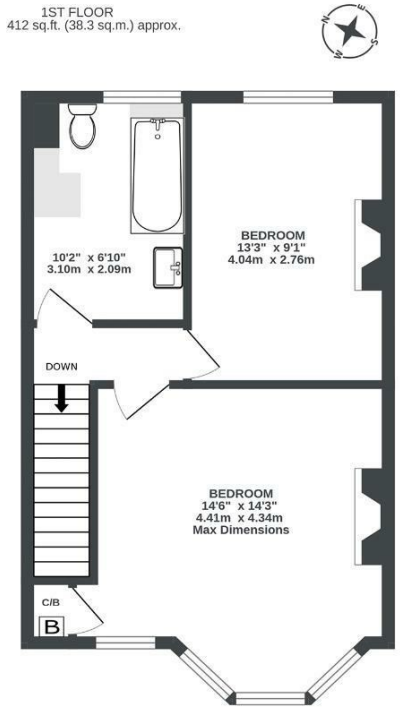
APPROXIMATE FLOOR AREA
76.9 SQM / 828 SQFT



GROUND FLOOR
416 sq.ft. (38.7 sq.m.) approx.



1ST FLOOR
412 sq.ft. (38.3 sq.m.) approx.



Illustrations are for reference purposes only, measurements are approximate, not to scale.

Boardwalk

Gilbert Road

REDFIELD, BRISTOL



£395,000



2 Bedrooms



Bristol, BS5
9DR



1 Bathrooms

"In the time that we've been here, we've come to love the area, whether it's tennis in the sunshine at St Georges Park, pints on the sun trap rooftop of the Dark Horse, or coffee and cookies at Bristol Loaf - we really do have everything we need on our doorstep (including lifelong friends we've met on our street). As we're both keen cyclists, having the cycle path at the end of our road has been a dream. We've made the house our perfect entertaining space from summer BBQs to dinner parties."

