

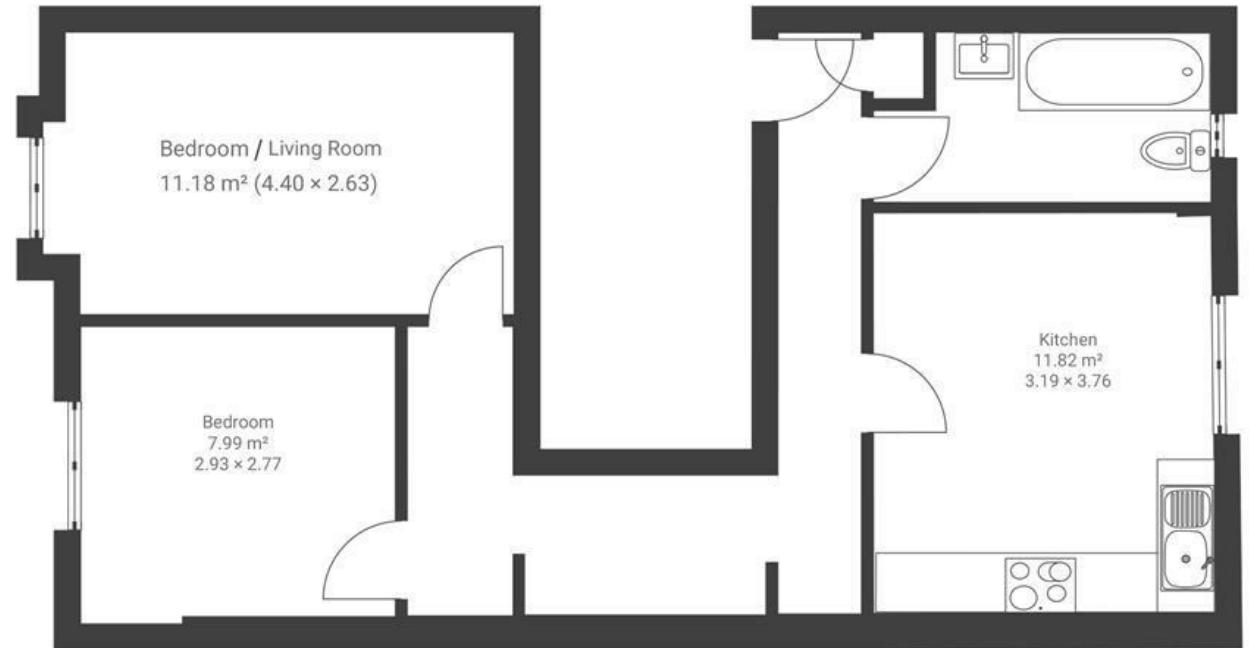
Ashley Road

MONTPELIER

APPROXIMATE FLOOR AREA
48 SQM / 517 SQFT



SECOND FLOOR



Boardwalk

Ashley Road

MONTPELIER, BRISTOL



£230,000



2 Bedrooms



Bristol, BS6
5NIJ



1 Bathrooms

"We are only two minutes from one of Bristol's best restaurants, The Bristolian! We love walking to Better Foods on a Sunday morning for fresh veg or having dinner in the numerous amazing restaurants in Stokes Croft. The location really doesn't get much better!"

