

Kings Drive

BISHOPSTON

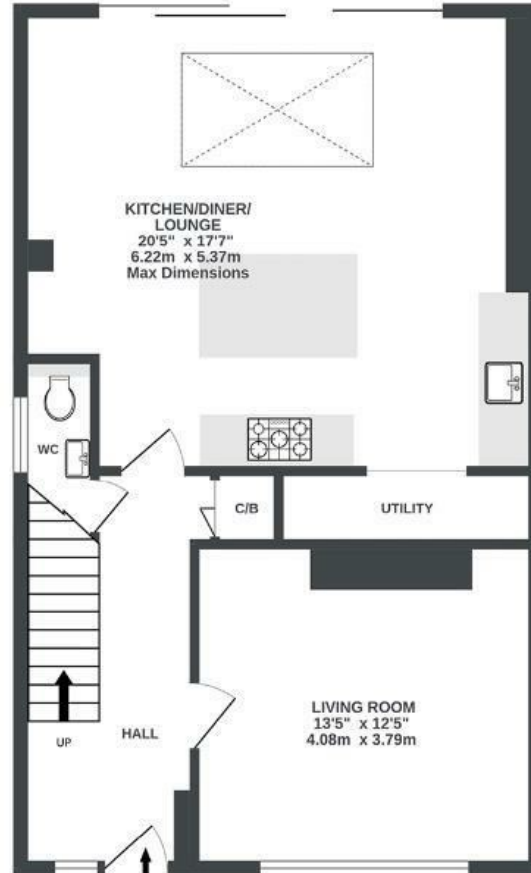
APPROXIMATE FLOOR AREA
103.5 SQM / 1114 SQFT



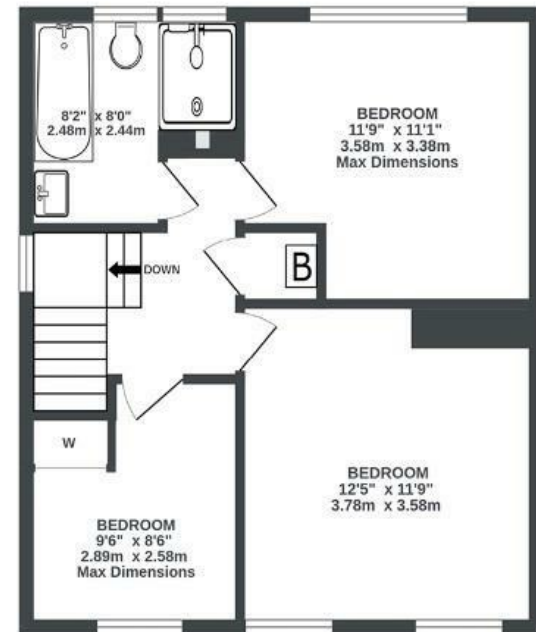
GARAGE
0 sq.ft. (0.0 sq.m.) approx.



GROUND FLOOR
648 sq.ft. (60.2 sq.m.) approx.



1ST FLOOR
465 sq.ft. (43.2 sq.m.) approx.



Illustrations are for reference purposes only, measurements are approximate, not to scale.

Boardwalk

Kings Drive

BISHOPSTON, BRISTOL



£750,000



3 Bedrooms



Bristol, BS7
8 IW



2 Bathrooms

"We love the garden. It's a peaceful, green haven and not overlooked. Facing south-west, it gets the sun for most of the day and early evening. We've encouraged wildlife so there are lots of birds singing, nesting and feeding. There's a community organic orchard nearby and we enjoy taking a walk down a hidden lane to Horfield Common, we find a strong community feel with the Ardagh at the heart and a cafe, play park and tennis all available. We'll really miss the new patio and the view into the garden from our kitchen/diner."

