

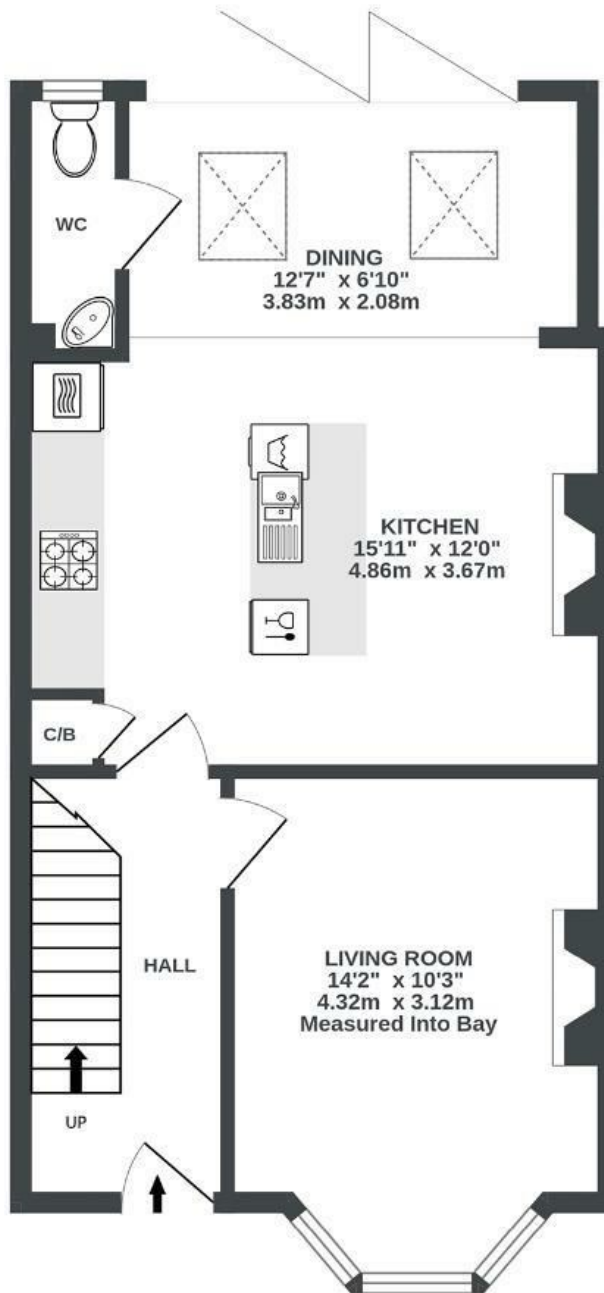
Sandholme Road

BRISLINGTON

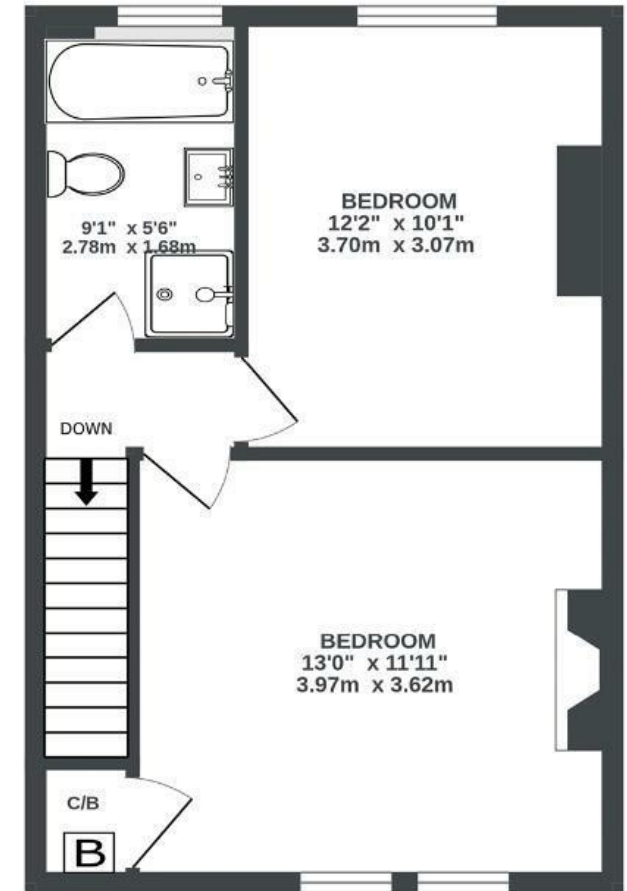
APPROXIMATE FLOOR AREA
79.2 SQM / 852 SQFT



GROUND FLOOR
487 sq.ft. (45.3 sq.m.) approx.



1ST FLOOR
365 sq.ft. (33.9 sq.m.) approx.



Boardwalk

Sandholme Road

BRISLINGTON, BRISTOL

£

£425,000

ZZ

2 Bedrooms



Bristol, BS4

3RX



2 Bathrooms

"Sandy Park is a place with a great sense of community. There are lots of events going on including the BS4 Arts trail and the BS4 Garden awards. It is fantastic being so close to so many wonderful independent cafes and businesses on Sandy Park Road. We particularly love the local deli, kin café and the greengrocers. We have a great connection to nature with the beautiful nightingale valley woodland and Amos Vale on our doorstep. Our favourite part about the house is the view over Bristol from the back. We love watching the sunset from the garden where we get sun all afternoon and evening. It's perfect for a summer barbecue and if you are lucky you may see some hot air balloons float overhead."

