

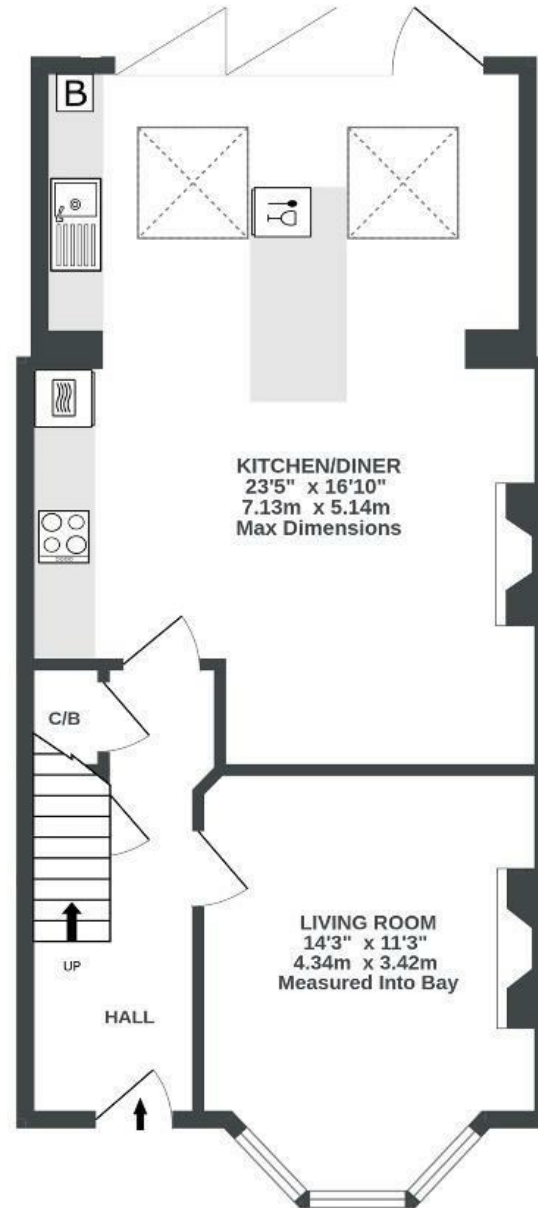
Wick Crescent

BRISLINGTON

APPROXIMATE FLOOR AREA
93.6 SQM / 1008 SQFT



GROUND FLOOR
578 sq.ft. (53.7 sq.m.) approx.



1ST FLOOR
430 sq.ft. (40.0 sq.m.) approx.



Illustrations are for reference purposes only, measurements are approximate, not to scale.

Boardwalk

Wick Crescent , BRISTOL



£465,000



3 Bedrooms



Bristol, BS4



1 Bathrooms

4HT

"Living on The Crescent made settling in Bristol so easy. We really enjoy having Sandy Park close by, particularly the Deli and Kin the coffee shop. Nightingale Valley Brook is a short walk from the house but feels like an oasis in the city. We enjoy the Langton for a post-work pint and take advantage of Bocabar who do the best local pizzas. The local community are young and friendly and we have loved being a part of it."

