

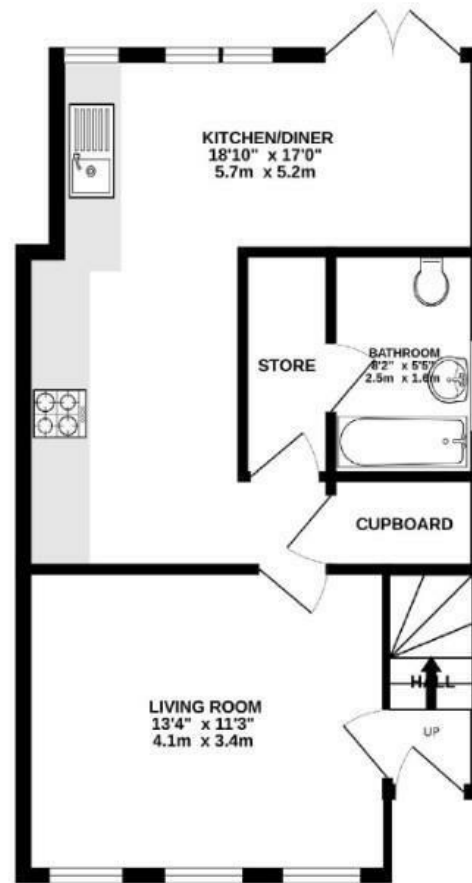
# Crediton Crescent

KNOWLE

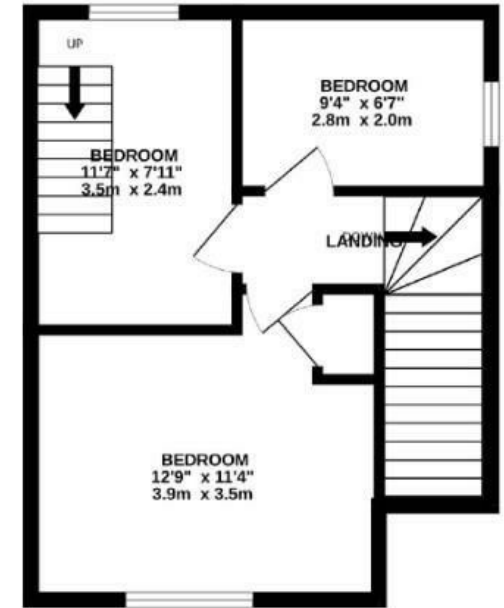
APPROXIMATE FLOOR AREA  
77 SQM / 829 SQFT



GROUND FLOOR  
481 sq.ft. (44.7 sq.m.) approx.



1ST FLOOR  
348 sq.ft. (32.3 sq.m.) approx.



~~Boardwalk~~

# Crediton

KNOWLE, BRISTOL

---



£270,000



3 Bedrooms



Bristol, BS4



1 Bathrooms

1DX

---

*"Knowle is a community for any situation and your neighbours are always at hand if needed. My favourite place to walk on a summers evening is North Street, with plenty of coffee shops, restaurants and delicatessens. My home has been a family home, and we have shared plenty of great memories here, throughout the years. The gardens in the spring/summer are fantastic and private, a lovely space to entertain."*

