

Boardwalk

Howard Road

WESTBURY PARK

APPROXIMATE FLOOR AREA
112.5 SQM / 1211 SQFT

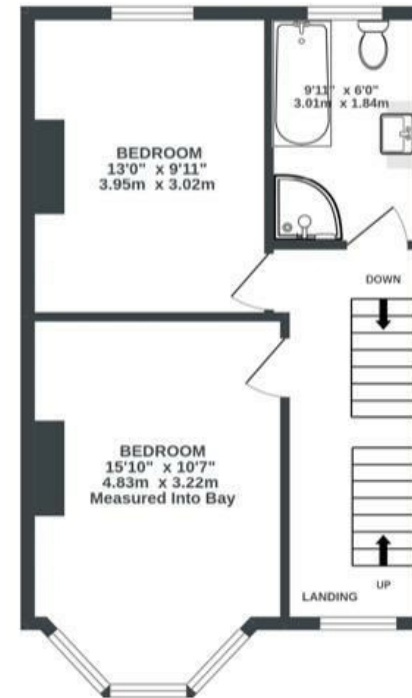
BOOK A VIEWING
01174 532 985
hello@boardwalkpropertyco.com



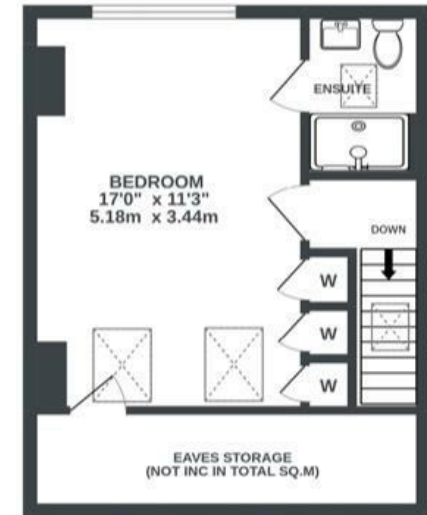
GROUND FLOOR
516 sq.ft. (48.0 sq.m.) approx.



1ST FLOOR
428 sq.ft. (39.7 sq.m.) approx.



2ND FLOOR
267 sq.ft. (24.8 sq.m.) approx.



Illustrations are for reference purposes only, measurements are approximate, not to scale.

Boardwalk

Howard Road

WESTBURY PARK, BRISTOL

£

£675,000

zzz

3 Bedrooms



Bristol, BS6

7X A



2 Bathrooms

"We have loved living on Howard Road for the last eight years and enjoyed completely refurbishing the house to make it a great family home. The middle room is fantastic for the kids to play in whilst we're making dinner and we love the period features- the stained glass by the front door, high ceilings and sash windows. Adding the ensuite master bedroom in the loft has created a wonderful space with fantastic views - great for watching the balloon fiesta. Whoever moves in will no doubt enjoy becoming part of the Howard Road community."

