

# Cromwell Road

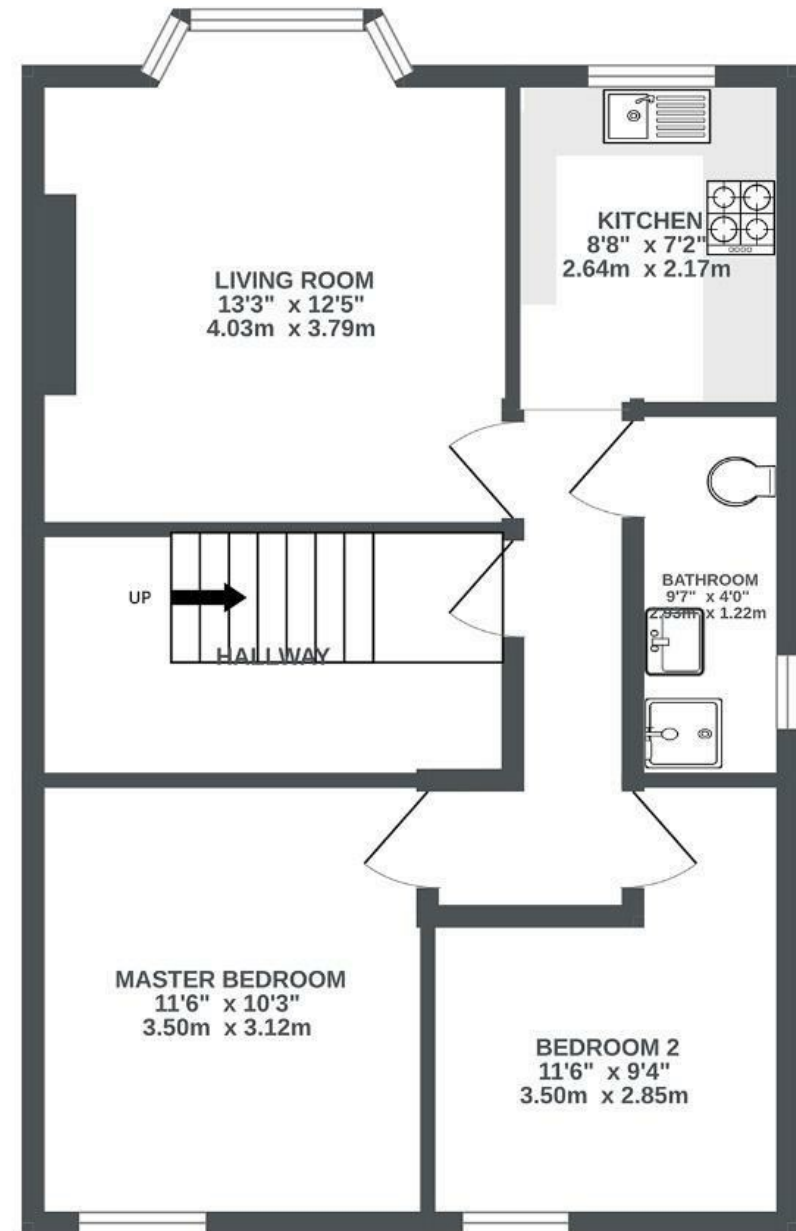
ST ANDREWS

APPROXIMATE FLOOR AREA

50 SQM / 538 SQFT



GROUND FLOOR  
538 sq.ft. (50.0 sq.m.) approx.



Illustrations are for reference purposes only, measurements are approximate, not to scale.

Boardwalk

# Cromwell Road

ST. ANDREWS, BRISTOL



£325,000



2 Bedrooms



Bristol, BS6



1 Bathrooms

5FX

*"One of our favourite things about living on Cromwell Road are the amazing views over Bristol and beyond from our windows; it definitely softens the blow when its your turn to do the dishes."*

