

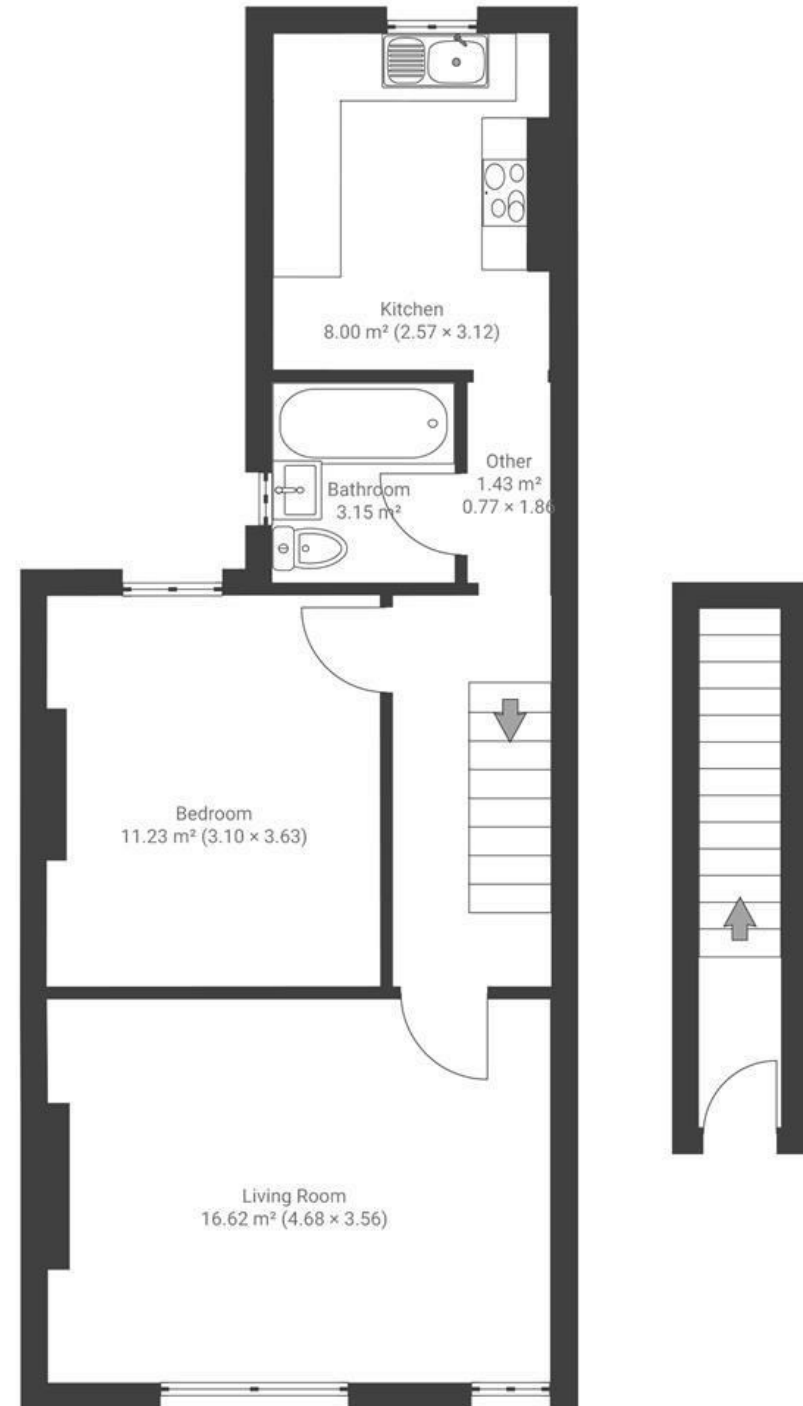
# Selworthy Road

## KNOWLE

APPROXIMATE FLOOR AREA  
52 SQM / 559 SQFT



FIRST FLOOR



**Boardwalk**

# Selworthy Road , BRISTOL



£240,000



1 Bedrooms



Bristol, BS4



1 Bathrooms

ZI F

*"Selworthy Road is a very nice part of the world to live in! The street has a very relaxed vibe, with considerate and friendly neighbours – which has been ideal for working from home. It's also been great having the Knowle Pub just around the corner for evenings when you want to get out of the house, but don't want to go far or have a big night. The location has been perfect for us. I walk everywhere but it's also easy to get the bus into central – and having Temple Meads 25 minutes' walk away has been perfect for weekends away or trips for work. I feel very sad to leave the flat and hope whoever moves here next loves it as much as we did!"*

