

Boardwalk

# Glen Park

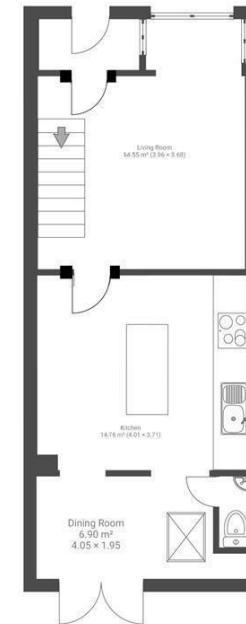
ST. GEORGE, BRISTOL

## Glen Park ST GEORGE

APPROXIMATE FLOOR AREA  
92 SQM / 990 SQFT



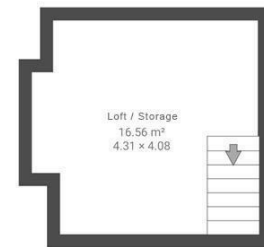
GROUND FLOOR



FIRST FLOOR



SECOND FLOOR



Boardwalk

# Glen Park

ST. GEORGE, BRISTOL



£350,000



2 Bedrooms



Bristol, BS5  
7ND



1 Bathrooms

*"We have loved living at 25 Glen Park, and feel very lucky to have called this our first home. We have enjoyed creating a peaceful space to relax in, or entertaining friends and family in the spacious kitchen. The location is amazing, with Troopers Hill Nature Reserve and St George's Park being under 20 minutes walk away."*

