

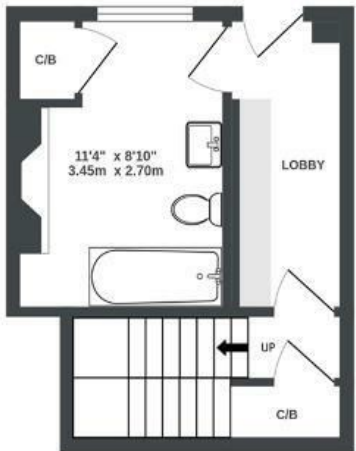
Cotswold Road

WINDMILL HILL

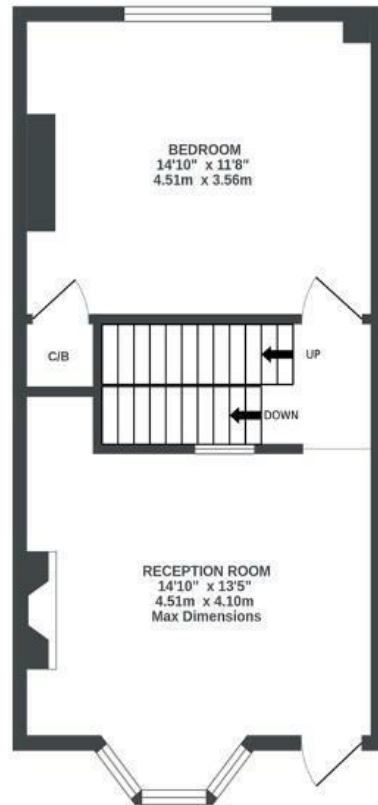
APPROXIMATE FLOOR AREA
134.1 SQM / 1444 SQFT



BASEMENT/GARDEN LEVEL
206 sq.ft. (19.1 sq.m.) approx.



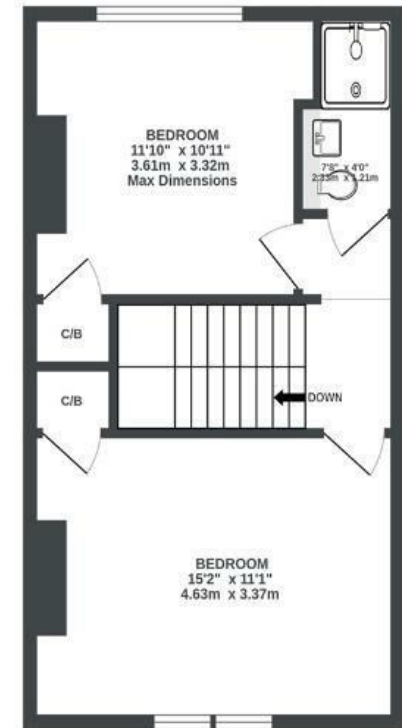
LOWER GROUND FLOOR
410 sq.ft. (38.1 sq.m.) approx.



UPPER GROUND FLOOR
427 sq.ft. (39.7 sq.m.) approx.



1ST FLOOR
400 sq.ft. (37.2 sq.m.) approx.



Illustrations are for reference purposes only, measurements are approximate, not to scale.

Boardwalk

Cotswold Road , BRISTOL

£

£570,000

zzz

3 Bedrooms



Bristol, BS3

4NT



2 Bathrooms

"I have loved watching the trees rustle and sway from the kitchen window seat, feasting with friends and family around the table, strolling in Victoria Park, shopping along North Street and drinks out in Wapping Wharf. I have loved living here and making it my home and look forward to finding it's next guardians to do the same!"

