

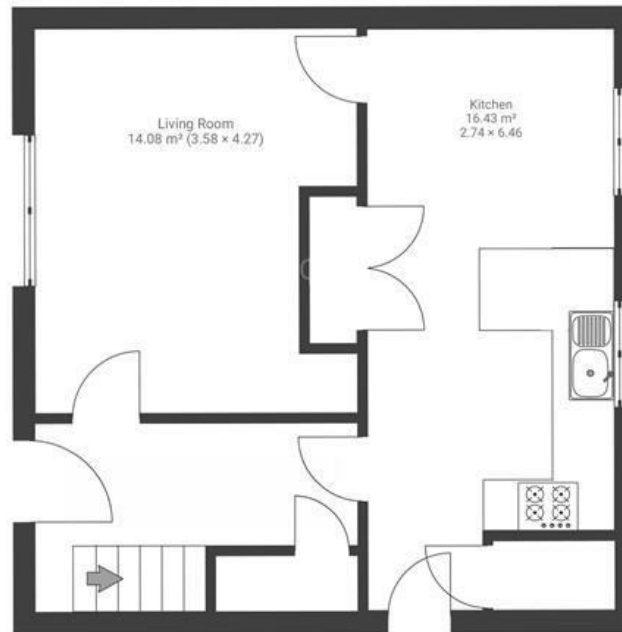
Crome Road

LOCKLEAZE

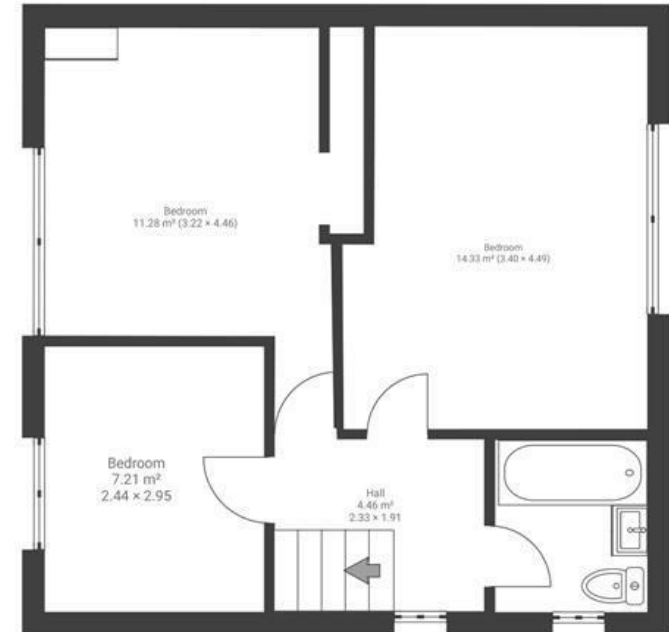
APPROXIMATE FLOOR AREA
85.3 SQM / 918 SQFT



GROUND FLOOR



FIRST FLOOR



Boardwalk

Crome Road

LOCKLEAZE, BRISTOL



£300,000



3 Bedrooms



Bristol, BS7
9YQ



1 Bathrooms

"My favourite bit of the house is how much light it gets, particularly in the garden. I love eating breakfast and dinner out back and being in the sun the whole time. The large garden is great for entertaining, and we have hooks for an awning out back where we have had some brilliant parties. Inside the rooms are all nice and big and again receive a lot of light. Being on the top of the hill in Lockleaze makes a big difference. The street is very friendly with a real mix of people on it."

