

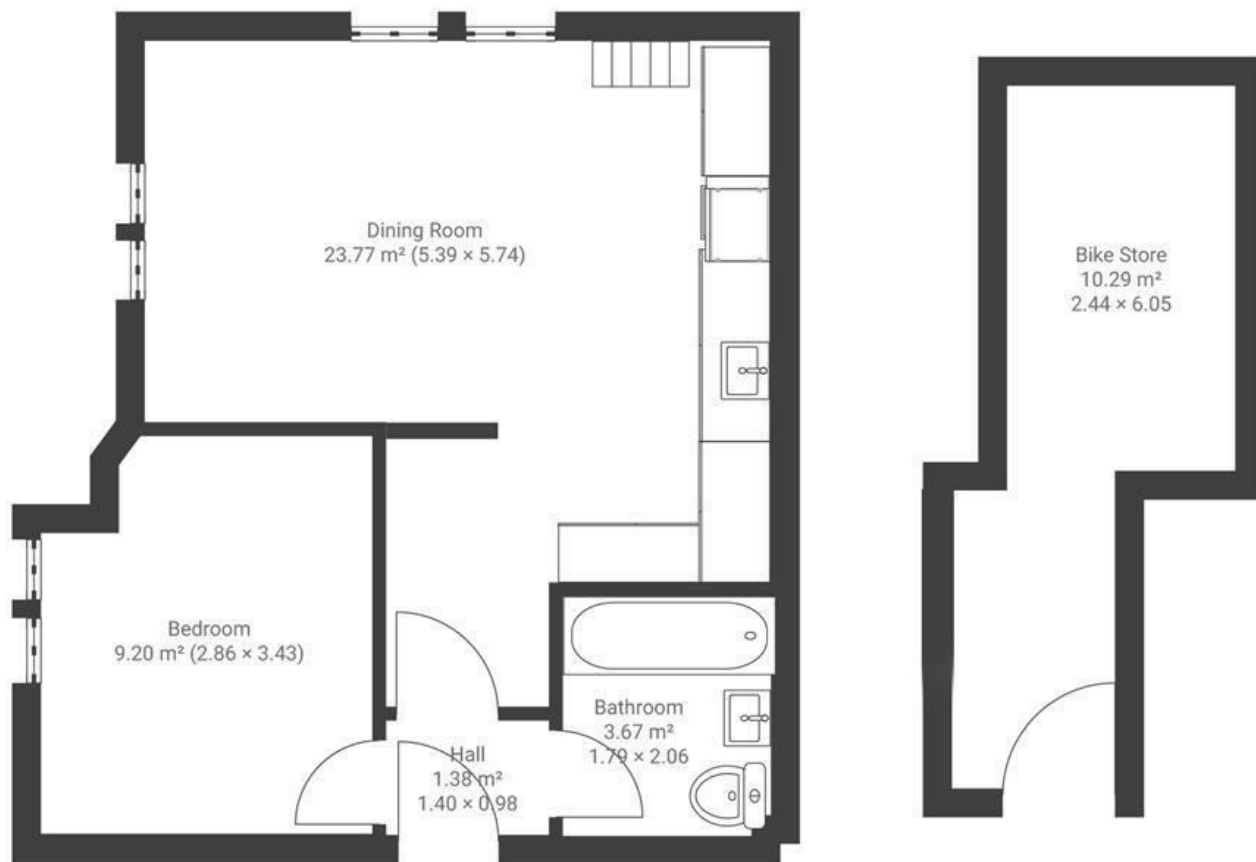
Newport Street

VICTORIA PARK

APPROXIMATE FLOOR AREA
50 SQM / 538 SQFT



GROUND FLOOR



Illustrations are for reference purposes only, measurements are approximate, not to scale.

Boardwalk

24 Newport , BRISTOL

£

£240,000



Bristol, BS3
4ST

ZZ

1 Bedrooms



1 Bathrooms

"This flat is great! It's so light and bright, and its clever design means it's really spacious. I've loved growing fruits and flowers in my first ever garden, and found the flat so easy to maintain being a newbuild. It's in a peaceful spot right by the park, and is perfect for entertaining as well as for working from home. Having a separate office space means there's a good separation between work and relaxation, and the location means I can go for a lunchtime wander to Bristol Loaf or a cycle to North Street (we've got a secure bike store too!)."

