

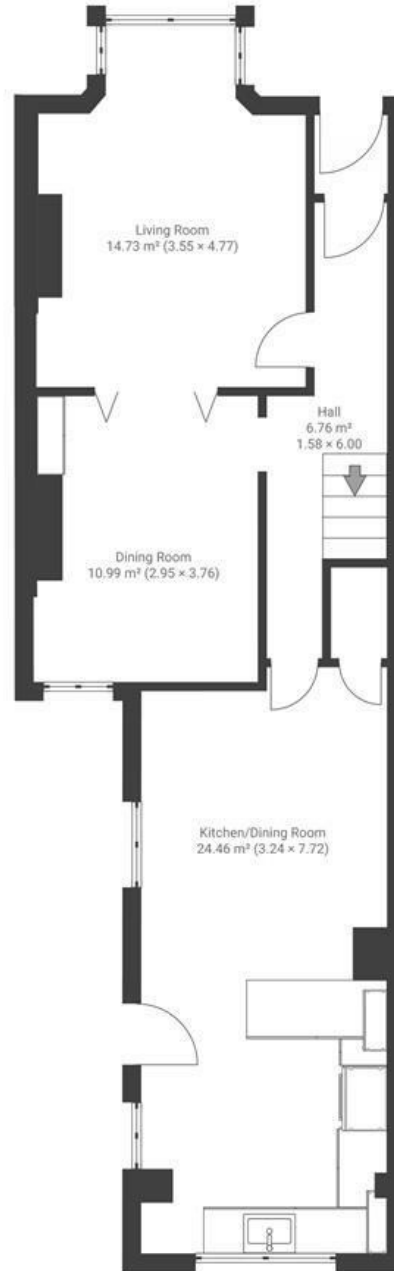
Hampden Road

KNOWLE

APPROXIMATE FLOOR AREA
145 SQM / 1533 SQFT



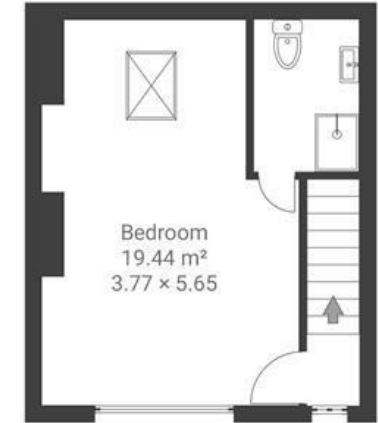
GROUND FLOOR



FIRST FLOOR



SECOND FLOOR



Boardwalk

Hampden Road

, BRISTOL



£550,000



4 Bedrooms



Bristol, BS4



2 Bathrooms

2 IN

"Our family have lived here for 22 years. We have loved the community with our neighbours / friends made. With stunning views from the dormer loft and hearing balloons overhead in the summer plus the perfect place to watch the fireworks at New Year over South Bristol. Perfect for dog walking - spoilt for choice with Arnos Cemetery, Perrets Park and Victoria Park - with a coffee at Harts Bakery of Loaf. A beautifully tranquil garden - perfect for relaxing/coffee/eating and drinking in the morning/evening or working outside."

