

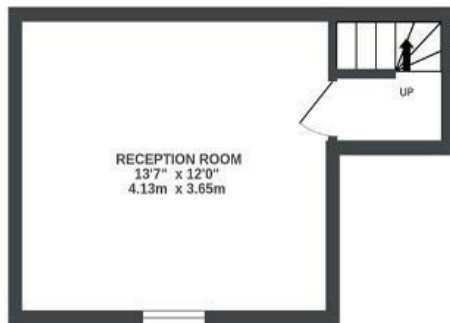
Bath Buildings

MONTPELIER

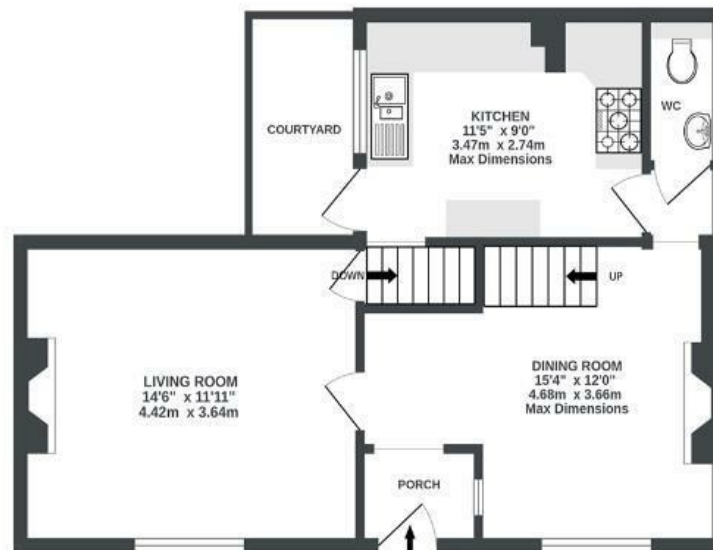
APPROXIMATE FLOOR AREA
99.6 SQM / 1072 SQFT



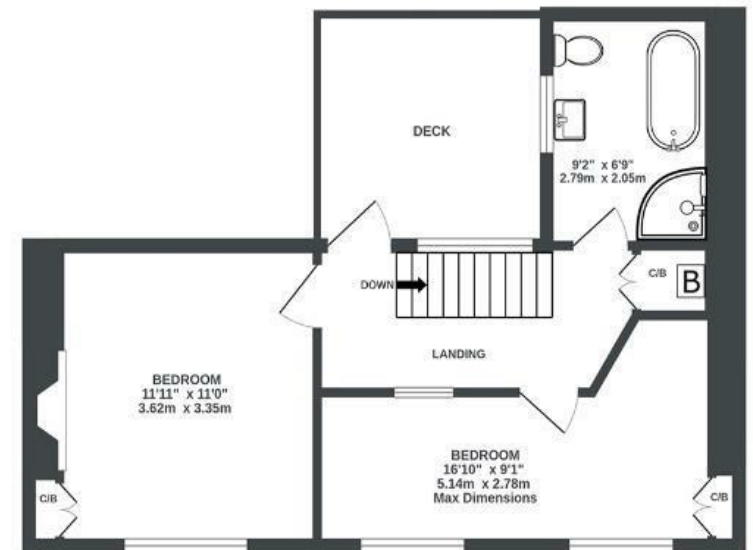
BASEMENT
188 sq.ft. (17.4 sq.m.) approx.



GROUND FLOOR
481 sq.ft. (44.7 sq.m.) approx.



1ST FLOOR
403 sq.ft. (37.5 sq.m.) approx.



Illustrations are for reference purposes only, measurements are approximate, not to scale.

~~Boardwalk~~

Bath Buildings

, BRISTOL

£

£475,000



BS6 5PT

zzz

2 Bedrooms



1 Bathrooms

"This is by far our favourite part of Bristol; Bianchi's, Caper and Cure, and The Bristolian are our favourite places to eat plus there's all the Gloucester Road bars and shops just around the corner. This has been a fantastic first house and I hope the new owners enjoy living here as much as we have"

