

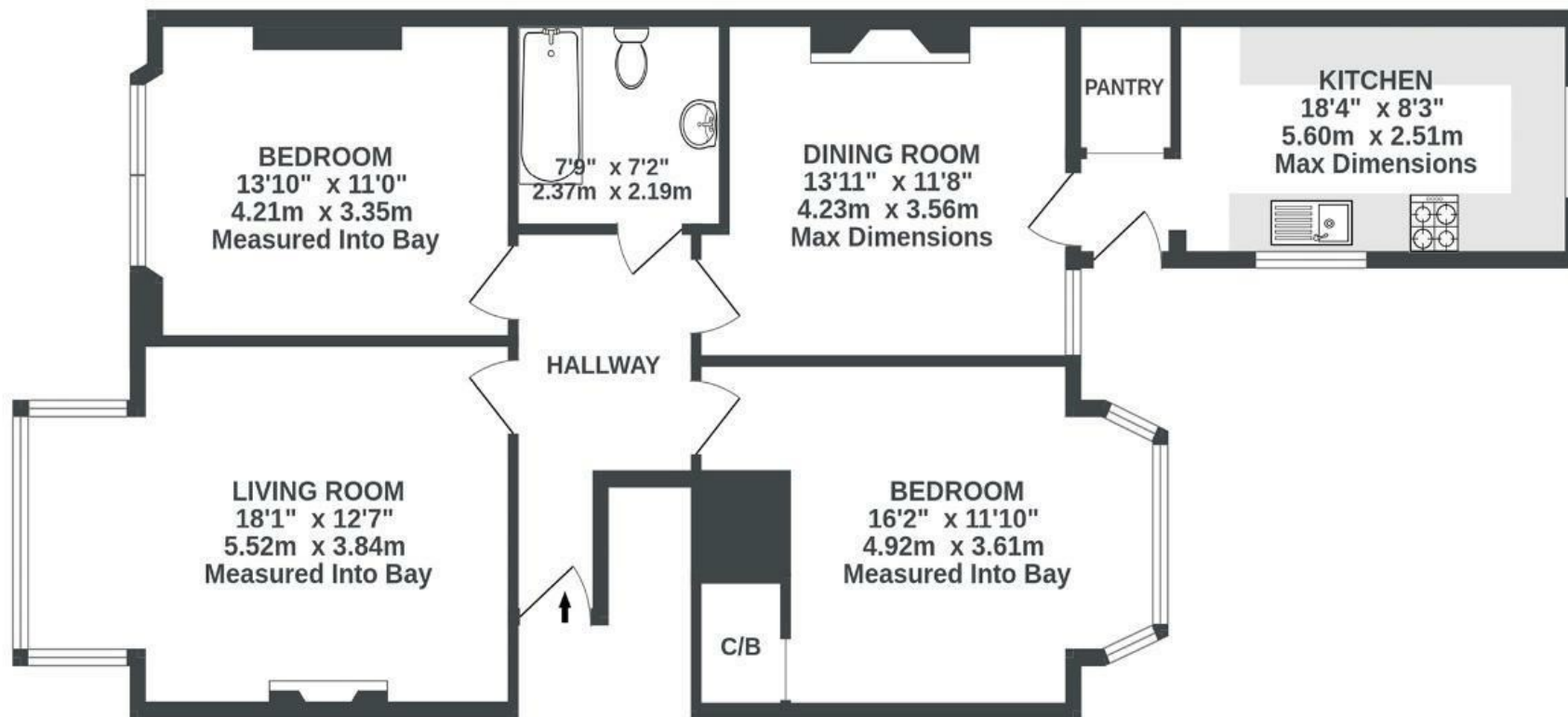
# Effingham Road

ST ANDREWS

APPROXIMATE FLOOR AREA  
88.7 SQM / 954 SQFT



GROUND FLOOR  
954 sq.ft. (88.7 sq.m.) approx.



Illustrations are for reference purposes only, measurements are approximate, not to scale.

Boardwalk

# Effingham Road , BRISTOL



£435,000



2 Bedrooms



Bristol, BS6

5AY



1 Bathrooms

*“Living opposite St Andrews Park has been amazing; watching the morning light come through the trees is such a nice way to start your day. We’re just around the corner from our favourite part of Gloucester Road as well, we’ll definitely miss going for a coffee at FED or a quick bite to eat at Pizzarova”*

