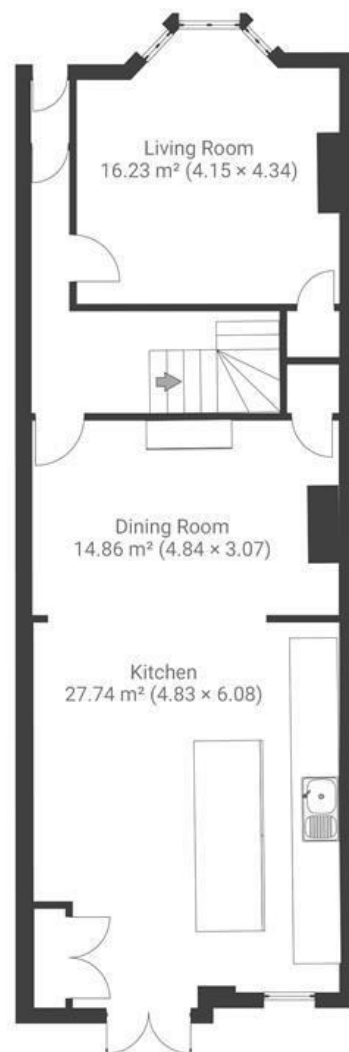


# Wells Road TOTTERDOWN

APPROXIMATE FLOOR AREA  
154 SQM / 1657 SQFT



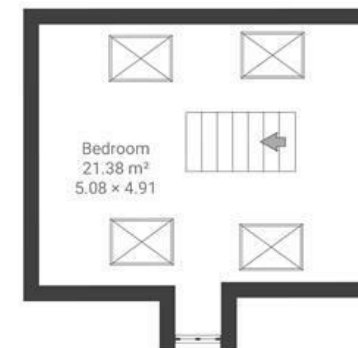
GROUND FLOOR



FIRST FLOOR



SECOND FLOOR



Boardwalk

# Wells Road , BRISTOL



£525,000



3 Bedrooms



Bristol, BS4

2 AX



1 Bathrooms

*"From entertaining many new friends on the patio and watching the sun go down at the end of the garden to growing our little family to 4, we've loved living in this characterful house. We've walked, scooted and bused into town, enjoyed everything on our doorstep from the arts trail and impromptu Halloween street parties, to parks packed with play areas for kids and coffee for us, Fox and West's great organic veg and Southside's excellent beers on a Friday night."*

