

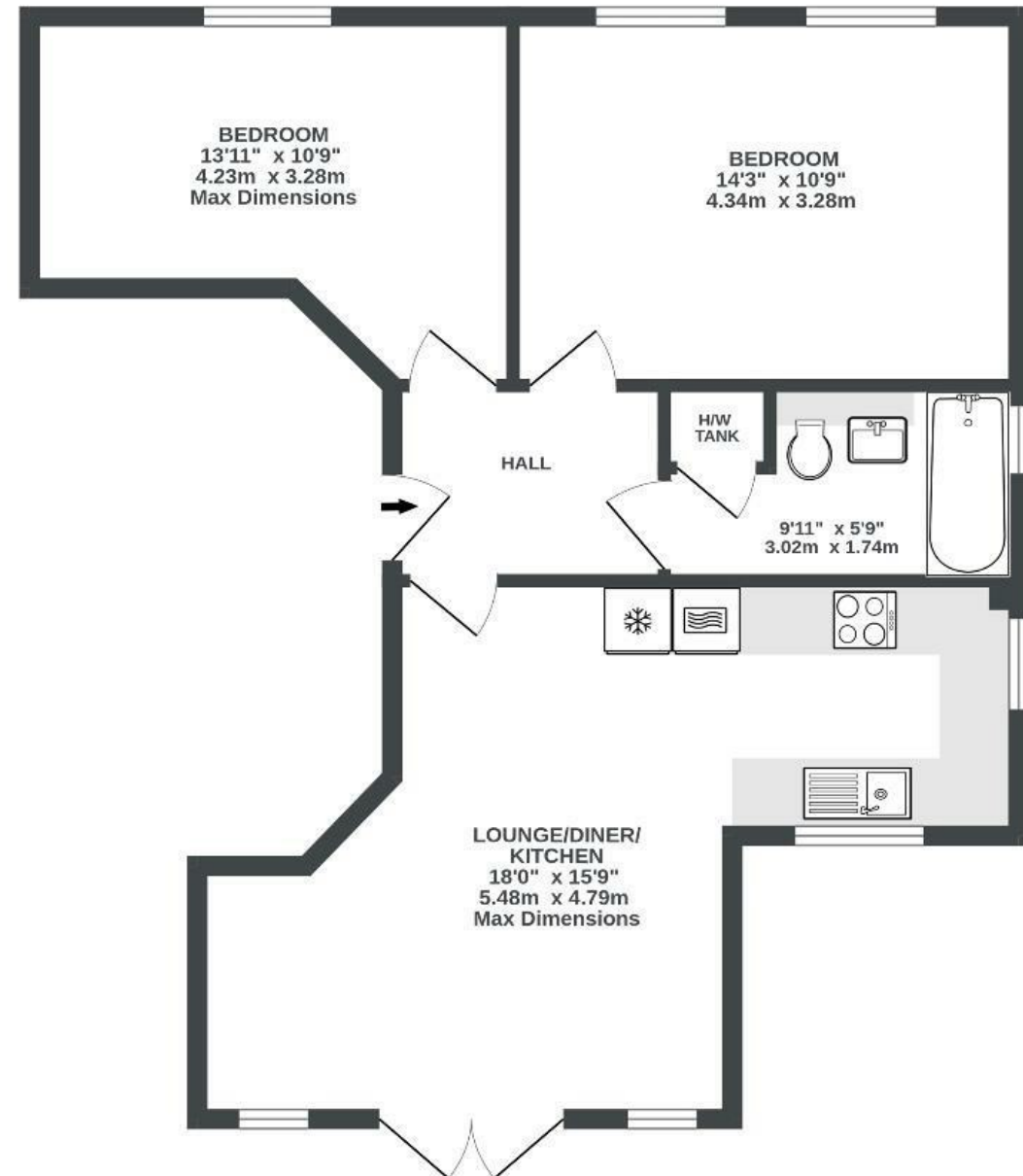
# Water Lilies

## KINGSWESTON

APPROXIMATE FLOOR AREA  
59.6 SQM / 641 SQFT



GROUND FLOOR  
641 sq.ft. (59.6 sq.m.) approx.



Illustrations are for reference purposes only, measurements are approximate, not to scale.

**Boardwalk**

# Water Lilies

## KINGS WESTON, BRISTOL

£  
£295,000

zZz  
2 Bedrooms

📍  
BS11 0GJ

🛁  
1 Bathrooms

*“What initially drew us to Waterlilies was the opportunity to experience communal and sustainable living in a new-build home. The flat itself is a beautiful, light and low-energy home built to passive house standards (MVHR, triple glazing, excellent insulation and so on). A really cool thing about Water Lilies is that it’s powered by a microgrid, which comprises solar panels across the whole site, and a big Tesla battery that stores any excess electricity. The microgrid is managed by an electrical company that was set up specifically for the site and after five years residents of Water Lilies will have the chance to buy the company and could then be in charge of setting their own prices.”*

