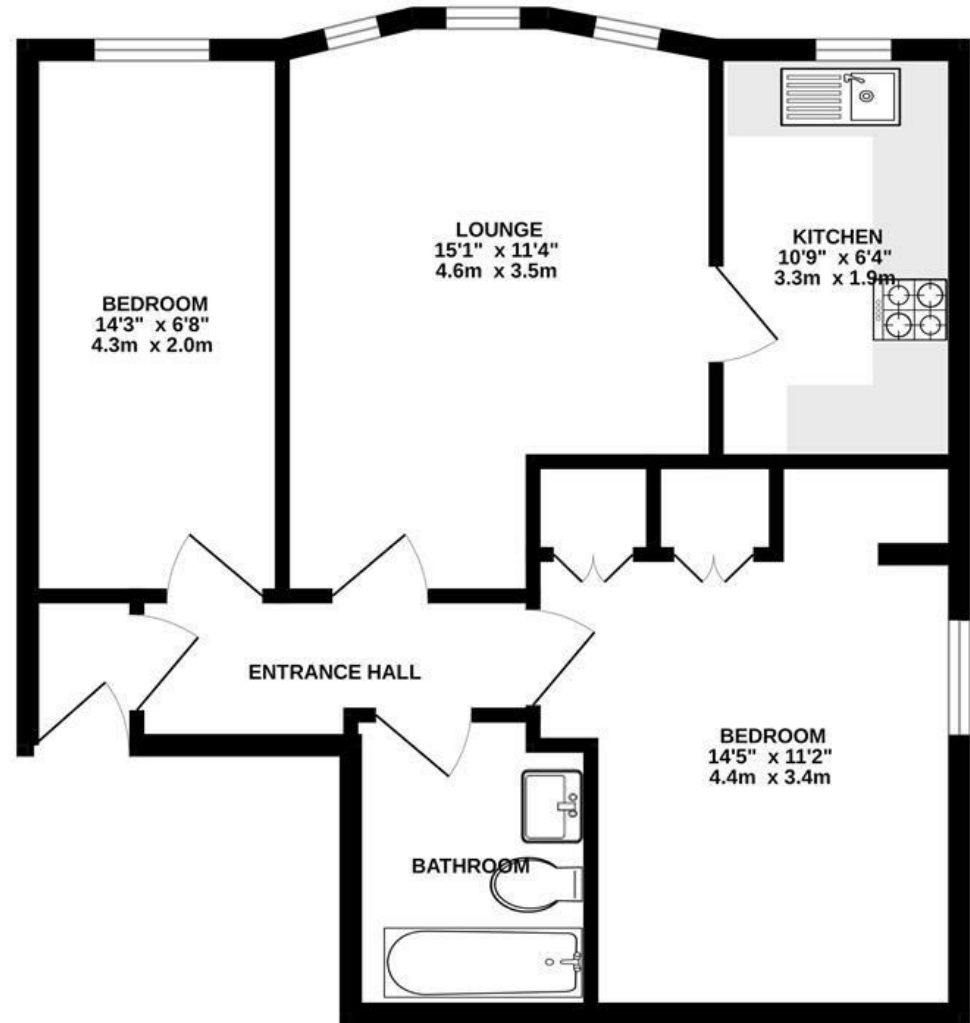


Poole's Wharf Ct.

HOTWELLS

APPROXIMATE FLOOR AREA
52 SQM / 560 SQFT



Illustrations are for reference purposes only,
measurements are approximate, not to scale.

Boardwalk

Pooles Wharf , BRISTOL



£325,000



2 Bedrooms



Bristol, BS8
4PR



1 Bathrooms

“This has been a great first home for us, from walking to the pubs along the harbourside to heading up Abbots Leigh Woods and Ashton Court we have been spoilt with things to do right on our doorstep”

