

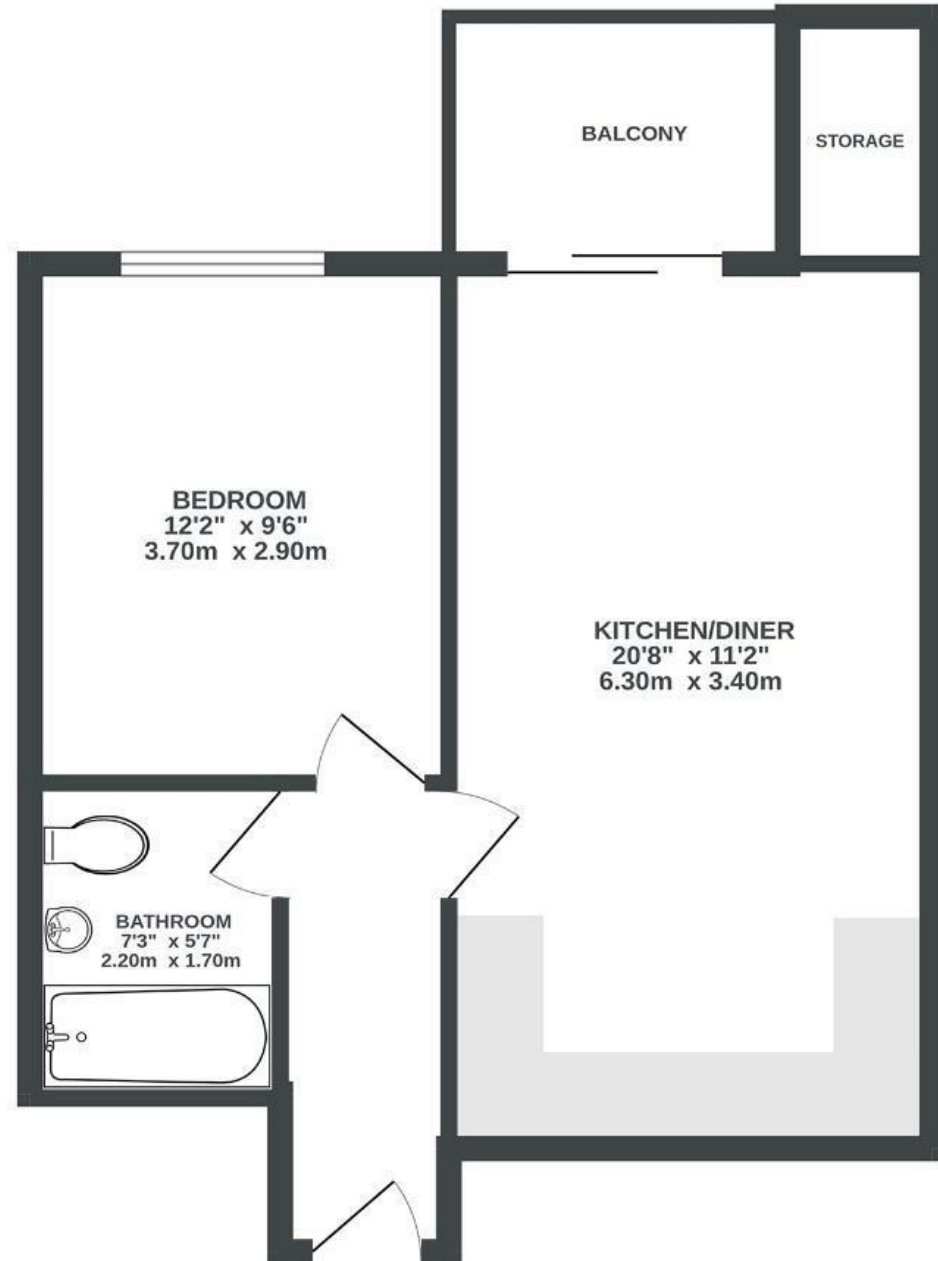
# Ducrow Court

ST PAULS

APPROXIMATE FLOOR AREA  
41.9 SQM / 451 SQFT



GROUND FLOOR  
451 sq.ft. (41.9 sq.m.) approx.



Illustrations are for reference purposes only, measurements are approximate, not to scale.

Boardwalk

# Ducrow Court

ST PAULS, BRISTOL



£205,000



1 Bedrooms



Bristol, BS2  
8AQ



1 Bathrooms

*"It's a lovely apartment with an amazing urban view from the balcony in one of the most interesting parts of town. Yet it's tucked away in a really quiet development. I loved being a 5 minute walk away from fun yoga classes at Hamilton House or live music at the Canteen. There is amazing food on your doorstep, from excellent vegan options to the best British tapas at Poco and food from all over the world. There's also Rice and Things for great Caribbean food."*

