

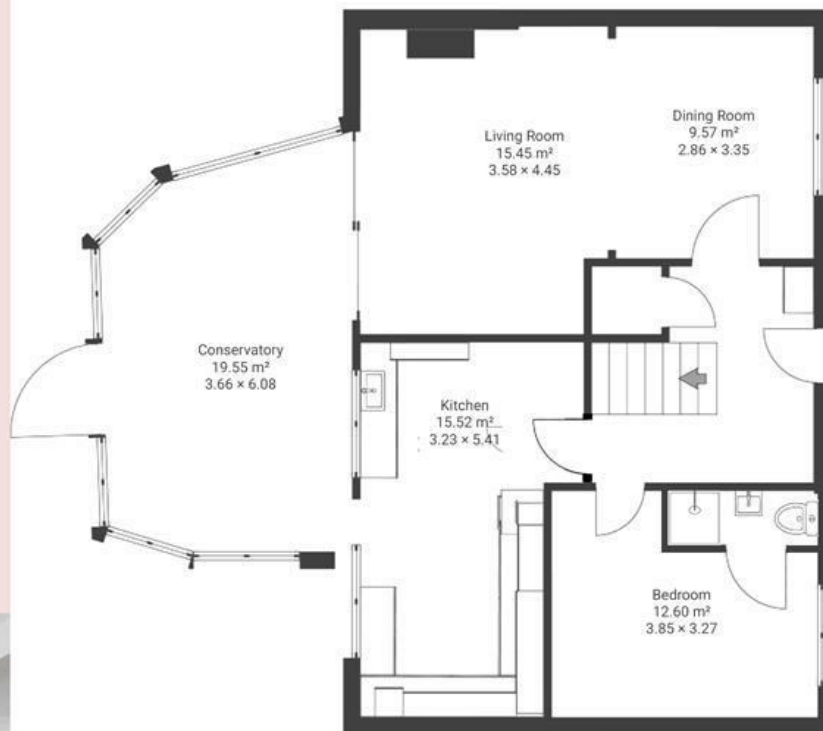
# Somerdale Avenue

## KNOWLE

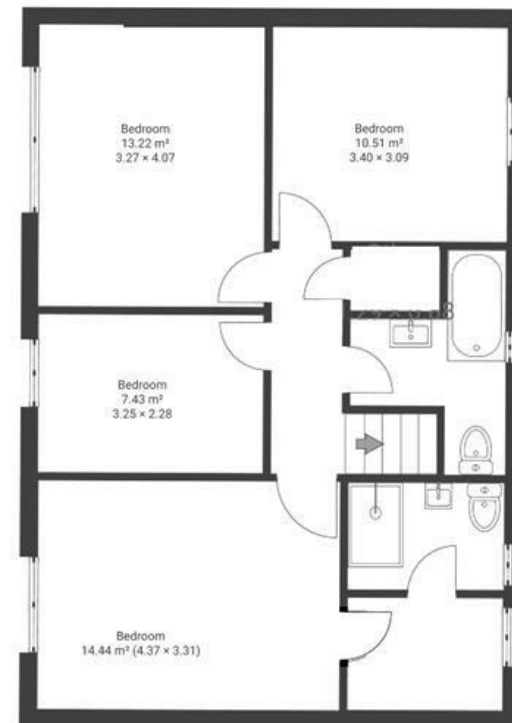
APPROXIMATE FLOOR AREA  
152 SQM / 1636 SQFT



GROUND FLOOR



FIRST FLOOR



Boardwalk

# Somerdale , BRISTOL

£

£450,000

ZZ

5 Bedrooms



Bristol, BS4

2XH



3 Bathrooms

*"I love living here as the house is really spacious and bright. The conservatory is my favourite room as it makes you feel like you're outside even on the days its not warm enough or dry enough. The south facing garden means every sunny day can be enjoyed to the full. I also really like that it is close enough to town to walk but far enough away that it is silent at night. I enjoy that the garden isn't overlooked so you feel like you get your own space and privacy."*

