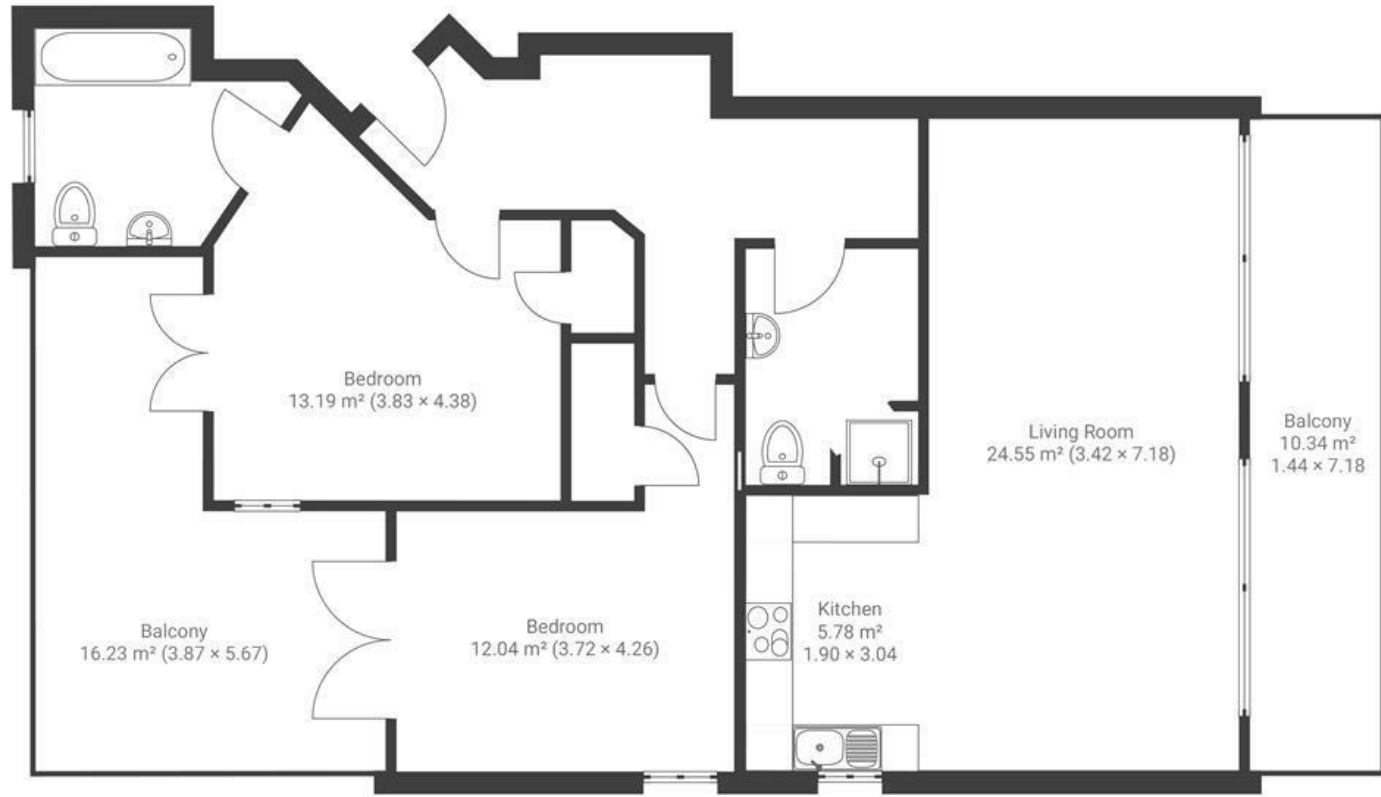


# The Leading Edge HOTWELLS

APPROXIMATE FLOOR AREA  
83 SQM / 893 SQFT



FIRST FLOOR



Boardwalk

# Hotwell Road , BRISTOL



£425,000



2 Bedrooms



Bristol, BS8



2 Bathrooms

4111

*"This flat is in such an ideal location; it has been great being able to get right into town for an evening dinner and then it's a nice walk past the harbour to get home"*

