

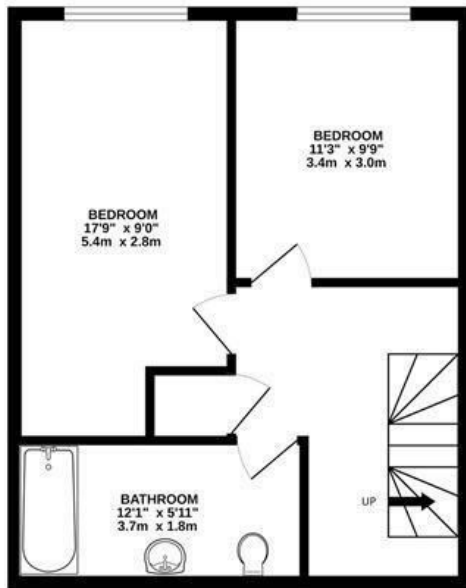
Old School House

KNOWLE

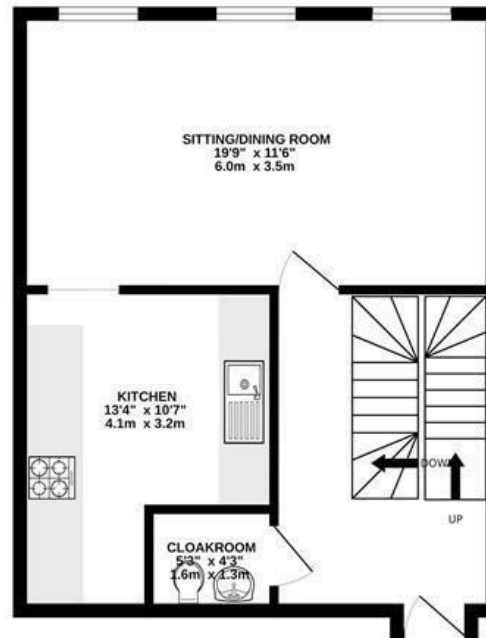
APPROXIMATE FLOOR AREA
108 SQM / 1163 SQFT



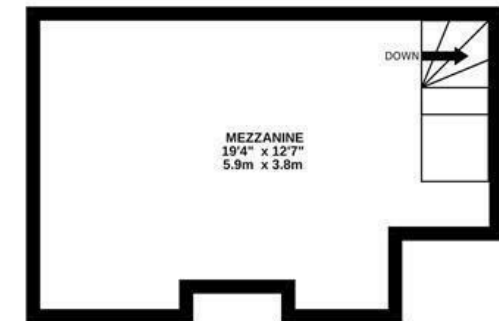
BASEMENT
446 sq.ft. (41.4 sq.m.) approx.



GROUND FLOOR
494 sq.ft. (45.9 sq.m.) approx.



1ST FLOOR
224 sq.ft. (20.8 sq.m.) approx.



Illustrations are for reference purposes only,
measurements are approximate, not to scale.

Boardwalk

Maxse Road , BRISTOL



£340,000



2 Bedrooms



Bristol, BS4



1 Bathrooms

2 IS

“Living in the Old School House has been great, there is a really unique feel to the building that I just love. It has been great being able to walk around the corner to grab a coffee on Wells Road just before a quick lap of Arnos Park”

